

AN ISO 9001:2015 CERTIFIED COMPANY



FITWELLTM — PIPING SYSTEMS —

The Complete **Plumbing** Solution
Under One Roof



cPVC Pipes & Fittings | uPVC Pipes & Fittings | SWR Pipes & Fittings | Agriculture Pipes & Fittings
FRP Manhole Cover | PVC Faucet | PTMT Faucet | Garden - Suction Hose Pipes

PRICE LIST
w.e.f. 15th July. 2025





ABOUT **FITWELL POLYTECHNIK Pvt. Ltd.**

We are a group of 3 manufacturing company. The group slowly but steadily diversified and started the manufacturing of cPVC, uPVC, SWR, Agri Pipe & Fittings, CP Fittings, Brass Fittings & C.I, M.I, G.I Pipe Fittings, Forged Pipe Fittings. established its products successfully both in Indian & foreign markets.

Our group of company was established in 1998. We are one of the leading manufacturers of cPVC, uPVC, SWR, Agri Pipe & Fittings, CP Fittings, Brass Fittings & C.I, M.I, G.I Pipe Fittings, Brass Forged Pipe Fittings. The factory has the necessary facilities for casting & Injection molding according to international standard. Threading as per standard and up to date inspection of testing chemical and physical properties is undertaken. We are having a team of highly qualified and experienced engineers for quality maintenance & consistent research development efforts are made through rigid quality control tests.

FITWELL Brand ISI pipe Fittings enjoy a good reputation for its quality and durability all over India & Abroad. It has the unique distinction of being sought after in Government departments, Municipal Corporations and oil & gas Plants. Our factory is equipped with the most up to date and sophisticated instruments for chemical and physical testing. The quality control is rigidly enforced through out the production process to ensure that the finished products are of the highest possible quality.

FITWELL Brand ISI Pipe Fittings are dependable beyond doubt. These are also exported to various countries, On account of consistent Quality **FITWELL** Brand ISI marked Pipe Fittings, Enjoy a great reputation in International Market With British International Organisation, Indian and American Standards.

Beautiful Design, Reliable Performance, Affordable Price.
With **FITWELL** You Get The Whole Package for Piping System.

AN ISO 9001:2015 COMPANY



WINNER-2020

INDIA 5000 BEST MSME AWARDS

FITWELL POLYTECHNIK PVT. LTD.



The Complete **Plumbing** solution

cPVC PIPES & FITTINGS

FOR HOT & COLD WATER

Application :

- Hot & Cold Water Plumbing.
- Corrosive Fluid Transportation.
- Chemical Fluid.
- Carrying Drinking Water.
- Residential Use.
- Industrial Use.

One Stop for multiple plumbing solution under one roof



PRODUCT FEATURES:



Corrosion Resistant



High Strength



UV Resistant



Effective Cost



Fire Resistant

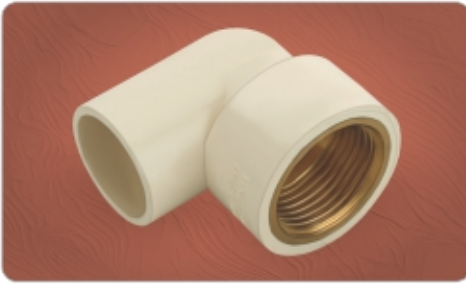


Easy to Install



Withstands temp. up to 93°C

CPVC FITTINGS IN SDR-11 AS PER ASTM D2846



BRASS ELBOW

Size (Inch)	Size mm	Std.Pkd.	Qty./Box	M.R.P.
1/2"	15	25	600	45.50
3/4"	20	30	300	70.00
1"	25	20	160	120.00
3/4"x1/2"	20x15	25	400	47.00
1"x1/2"	25x15	25	275	70.00
1"x3/4"	25x20	25	225	175.00



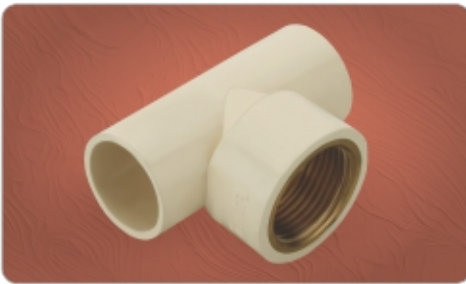
BRASS M.T.A.

Size (Inch)	Size mm	Std.Pkd.	Qty./Box	M.R.P.
1/2"	15	25	250	80.00
3/4"	20	50	350	120.00
1"	25	30	180	177.50
1.1/4"	32	8	56	360.00
1.1/2"	40	10	50	510.00
2"	50	5	40	770.00
2.1/2"	65	25	-	1500.00
3"	80	25	-	1840.00
3/4"x1/2"	20x15	50	500	80.00
1"x1/2"	25x15	50	400	95.00
1"x3/4"	25x20	30	240	165.00



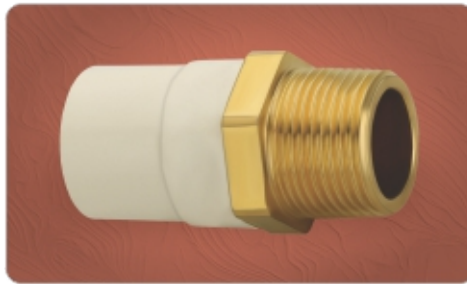
BRASS F.T.A.

Size (Inch)	Size mm	Std.Pkd.	Qty./Box	M.R.P.
1/2"	15	25	300	78.00
3/4"	20	50	450	125.00
1"	25	25	225	128.40
1.1/4"	32	16	96	320.00
1.1/2"	40	15	75	390.00
2"	50	4	32	500.00
2.1/2"	65	25	-	1250.00
3"	80	25	-	1400.00
3/4"x1/2"	20x15	50	500	46.00
1"x1/2"	25x15	50	400	60.00
1"x3/4"	25x20	25	150	145.00



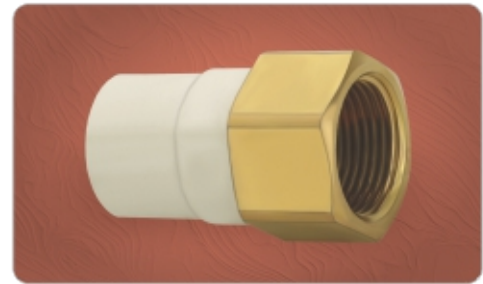
BRASS TEE

Size (Inch)	Size mm	Std.Pkd.	Qty./Box	M.R.P.
1/2"	15	20	200	69.00
3/4"	20	35	245	94.00
1"	25	25	150	180.00
3/4"x1/2"	20x15	50	300	55.00
1"x1/2"	25x15	30	180	75.00
1"x3/4"	25x20	20	160	199.00



BRASS MTA HEXAGON

Size (Inch)	Size mm	Std.Pkd.	Qty./Box	M.R.P.
3/4"	20	22	176	159.00
1"	25	20	120	284.00
1.1/4"	32	6	60	498.00
1.1/2"	40	4	32	744.00
2"	50	2	20	1215.00
3/4"x1/2"	20x15	24	192	117.50
1"x1/2"	25x15	15	90	130.00
1"x3/4"	25x20	15	90	190.00



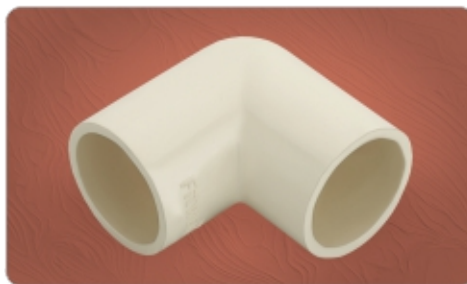
BRASS FTA HEXAGON

Size (Inch)	Size mm	Std.Pkd.	Qty./Box	M.R.P.
3/4"	20	50	250	175.00
1"	25	11	66	283.50
1.1/4"	32	6	60	495.50
1.1/2"	40	4	32	736.00
2"	50	2	20	1020.00
3/4"x1/2"	20x15	20	200	154.00
1"x1/2"	25x15	14	84	170.00
1"x3/4"	25x20	14	84	200.00



BRASS MALE ELBOW

Size (Inch)	Size mm	Std.Pkd.	Qty./Box	M.R.P.
3/4" x 1/2"	20x15	25	250	100.00
1" x 1/2"	25x15	25	175	120.00



ELBOW

Size (Inch)	Size mm	Std.Pkd.	Qty./Box	M.R.P.
1/2"	15	100	1200	9.30
3/4"	20	100	500	13.50
1"	25	50	250	28.00
1.1/4"	32	30	150	55.50
1.1/2"	40	10	90	80.00
2"	50	8	40	230.00
2.1/2"	65	22	-	300.00
3"	80	15	-	455.00



EQUAL TEE

Size (Inch)	Size mm	Std.Pkd.	Qty./Box	M.R.P.
1/2"	15	50	800	13.50
3/4"	20	50	350	19.00
1"	25	20	180	34.00
1.1/4"	32	20	100	73.00
1.1/2"	40	10	70	121.00
2"	50	4	32	283.00
2.1/2"	65	19	-	360.00
3"	80	10	-	560.00

CPVC FITTINGS IN SDR-11 AS PER ASTM D2846



COUPLER

Size (Inch)	Size mm	Std.Pkd.	Qty./Box	M.R.P.
1/2"	15	100	2000	7.00
3/4"	20	100	800	10.00
1"	25	50	400	18.00
1.1/4"	32	50	200	34.50
1.1/2"	40	20	160	61.50
2"	50	15	75	135.50
2.1/2"	65	20	-	175.00
3"	80	27	-	250.00



M.T.A.

Size (Inch)	Size mm	Std.Pkd.	Qty./Box	M.R.P.
1/2"	15	100	800	12.50
3/4"	20	100	800	15.50
1"	25	50	400	21.00
1.1/4"	32	25	250	43.00
1.1/2"	40	20	160	63.00
2"	50	15	75	148.00
2.1/2"	65	48	-	190.00
3"	80	36	-	265.00
3/4"x1/2"	20x15	150	1050	14.30



F.T.A.

Size (Inch)	Size mm	Std.Pkd.	Qty./Box	M.R.P.
1/2"	15	100	700	12.50
3/4"	20	100	600	19.50
1"	25	50	350	30.00
1.1/4"	32	25	200	65.50
1.1/2"	40	20	120	107.00
2"	50	15	60	210.00
2.1/2"	65	48	-	195.00
3"	80	36	-	285.00
3/4"x1/2"	20x15	100	800	18.75



UNION

Size (Inch)	Size mm	Std.Pkd.	Qty./Box	M.R.P.
1/2"	15	25	300	43.50
3/4"	20	25	300	70.00
1"	25	20	180	90.00
1.1/4"	32	15	120	132.30
1.1/2"	40	15	75	232.30
2"	50	8	32	447.00



SOCKET TANK NIPPLE

Size (Inch)	Size mm	Std.Pkd.	Qty./Box	M.R.P.
3/4"	20	40	280	32.00
1"	25	25	200	50.00
1.1/4"	32	25	125	84.00
1.1/2"	40	20	80	130.00
2"	50	10	50	230.00



TANK CONT.

Size (Inch)	Size mm	Std.Pkd.	Qty./Box	M.R.P.
1/2"	15	25	300	39.00
3/4"	20	25	275	47.00
1"	25	20	160	67.00
1.1/4"	32	15	90	100.00
1.1/2"	40	12	72	152.30
2"	50	6	48	261.30



ELBOW 45°

Size (Inch)	Size mm	Std.Pkd.	Qty./Box	M.R.P.
1/2"	15	100	1600	9.00
3/4"	20	100	700	13.00
1"	25	50	300	27.00
1.1/4"	32	20	180	54.00
1.1/2"	40	20	120	74.00
2"	50	10	50	115.00



END CAP

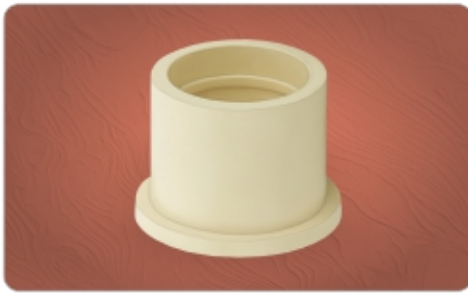
Size (Inch)	Size mm	Std.Pkd.	Qty./Box	M.R.P.
1/2"	15	100	3200	5.50
3/4"	20	200	1400	9.00
1"	25	100	700	13.00
1.1/4"	32	50	400	20.80
1.1/2"	40	25	250	46.10
2"	50	20	120	101.50



STEPOVER BEND

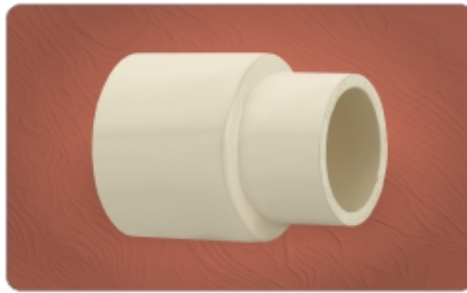
Size (Inch)	Size mm	Std.Pkd.	Qty./Box	M.R.P.
3/4"	20	25	150	80.00
1"	25	20	100	95.00
1.1/4"	32	20	100	121.00

CPVC FITTINGS IN SDR-11 AS PER ASTM D2846



REDUCER BUSH

Size (Inch)	Size mm	Std.Pkd.	Qty./Box	M.R.P.
3/4"x1/2"	20x15	100	1000	7.90
1"x1/2"	25x15	100	1000	12.50
1"x3/4"	25x20	100	1000	14.00
1.1/4"x3/4"	32x20	60	540	30.50
1.1/4"x1"	32x25	60	540	26.00
1.1/2"x3/4"	40x20	50	350	47.50
1.1/2"x1"	40x25	50	350	47.00
1.1/2"x1.1/4"	40x32	50	350	32.50
2"x3/4"	50x20	20	180	92.00
2"x1"	50x25	20	180	93.00
2"x1.1/4"	50x32	20	180	97.00
2"x1.1/2"	50x40	20	180	82.00



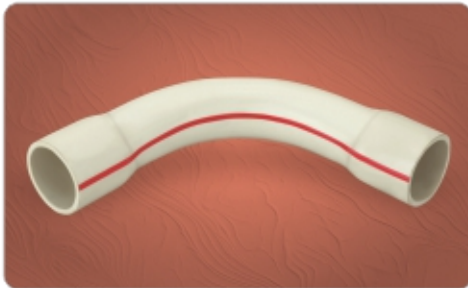
REDUCER COUPLER

Size (Inch)	Size mm	Std.Pkd.	Qty./Box	M.R.P.
3/4"x1/2"	20x15	100	1000	14.40
1"x1/2"	25x15	100	700	18.00
1"x3/4"	25x20	100	500	20.00
1.1/4"x3/4"	32x20	50	300	32.50
1.1/4"x1"	32x25	40	280	36.50
1.1/2"x3/4"	40x20	25	225	46.50
1.1/2"x1"	40x25	20	200	51.50
1.1/2"x1.1/4"	40x32	20	180	70.00
2"x3/4"	50x20	15	90	170.00
2"x1"	50x25	15	75	130.00
2"x1.1/4"	50x32	15	90	143.00
2"x1.1/2"	50x40	15	90	160.00



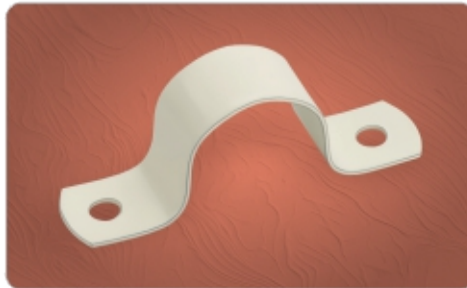
REDUCER TEE

Size (Inch)	Size mm	Std.Pkd.	Qty./Box	M.R.P.
3/4"x1/2"	20x15	20	200	21.00
1"x1/2"	25x15	20	200	38.00
1"x3/4"	25x20	35	210	42.00
1.1/4"x3/4"	32x20	20	140	100.00
1.1/4"x1"	32x25	20	120	92.00
1.1/2"x3/4"	40x20	10	70	153.00
1.1/2"x1"	40x25	10	60	151.00
1.1/2"x1.1/4"	40x32	10	60	147.00
2"x3/4"	50x20	10	70	293.00
2"x1"	50x25	10	40	283.00
2"x1.1/4"	50x32	5	40	312.00
2"x1.1/2"	50x40	5	40	290.00



LONG BEND

Size (Inch)	Size mm	Std.Pkd.	Qty./Box	M.R.P.
1/2"	15	20	220	37.00
3/4"	20	25	175	58.00
1"	25	20	100	90.00
1.1/4"	32	8	48	142.00
1.1/2"	40	5	30	206.00
2"	50	3	6	370.00



METAL CLAMP

Size (Inch)	Size mm	Std.Pkd.	Qty./Box	M.R.P.
1/2"	16	100	1200	6.50
3/4"	22	100	1000	7.20
1"	29	100	700	7.80
1.1/4"	35	100	600	8.50
1.1/2"	41	100	500	10.60
2"	50	100	400	11.00



NAIL CLAMP

Size (Inch)	Size mm	Std.Pkd.	Qty./Box	M.R.P.
1/2"	16	100	1200	3.00
3/4"	22	100	1000	6.00
1"	29	100	700	8.00
1.1/4"	35	100	600	11.00
1.1/2"	41	100	500	15.00
2"	50	100	400	21.00



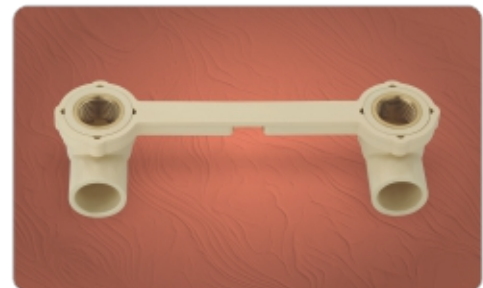
TRANSITION BUSH

Size (Inch)	Size mm	Std.Pkd.	Qty./Box	M.R.P.
3/4" x 3/4"	20 x 20	100	1300	10.00
1" x 3/4"	25 x 20	100	1200	19.00
1" x 1"	25 x 25	100	700	13.00



MIXER ADAPTOR ALL IN ONE 5" & 6"

Size (Inch)	Size mm	Std.Pkd.	Qty./Box	M.R.P.
3/4"x1/2"	20x15	1	32	306.50



SINK MIXER ADAPTOR ALL IN ONE

Size (Inch)	Size mm	Std.Pkd.	Qty./Box	M.R.P.
3/4"x1/2"	20x15	3	96	204.00

CPVC FITTINGS IN SDR-11 AS PER ASTM D2846



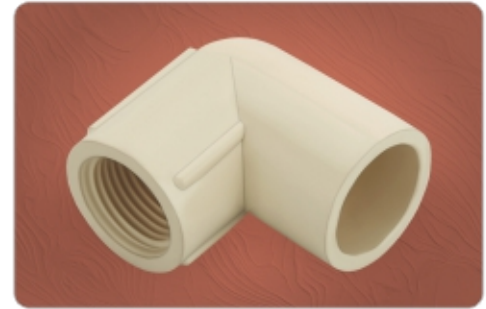
NON RETURN VALVE

Size (Inch)	Size mm	Std.Pkd.	Qty./Box	M.R.P.
3/4"	20	15	75	160.00
1"	25	10	80	165.00
1.1/4"	32	10	60	170.00



REDUCER ELBOW

Size (Inch)	Size mm	Std.Pkd.	Qty./Box	M.R.P.
3/4"x1/2"	20x15	100	800	15.00
1"x1/2"	25x15	50	400	23.50
1"x3/4"	25x20	50	300	27.00



THREAD ELBOW

Size (Inch)	Size mm	Std.Pkd.	Qty./Box	M.R.P.
3/4" x 1/2"	20x15	100	500	28.75



CROSS TEE

Size (Inch)	Size mm	Std.Pkd.	Qty./Box	M.R.P.
1/2"	15	50	300	41.50
3/4"	20	50	300	65.50
1"	25	25	125	81.00
1.1/4"	32	15	90	100.00



END PLUG

Size (Inch)	Size mm	Std.Pkd.	Qty./Box	M.R.P.
1/2"	15	100	800	6.50
3/4"	20	100	1000	7.50



STEP OVER BEND (FEB.)

Size (Inch)	Size mm	Std.Pkd.	Qty./Box	M.R.P.
1/2"	15	20	220	37.00
3/4"	20	25	175	58.00
1"	25	20	100	90.00
1.1/4"	32	8	48	142.00
1.1/2"	40	5	30	206.00
2"	50	3	6	370.00



SOLVENT CEMENT

Size (Tin)	Inner Pack.	Master Pack.	M.R.P.
59 ml.	30	240	140.00
118 ml.	24	144	200.00
237 ml.	24	96	320.00
473 ml.	12	72	490.00
946 ml.	6	36	880.00



PRODUCT FEATURES:



Corrosion Resistant



High Strength



UV Resistant



Effective Cost



Fire Resistant

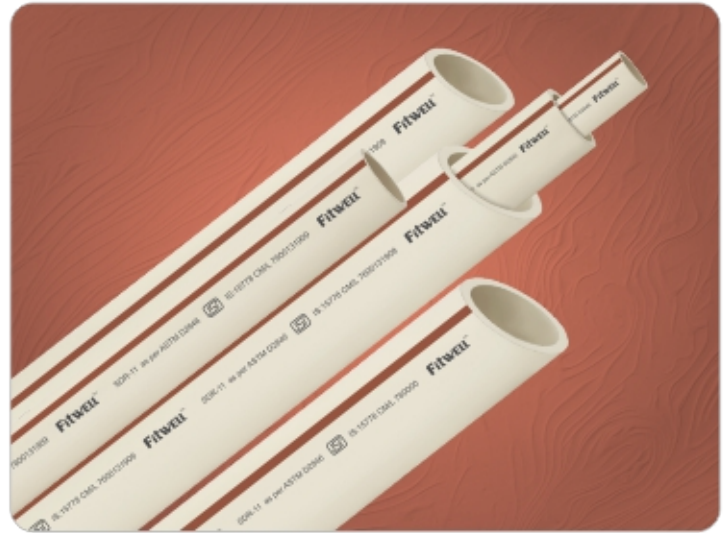


Easy to Install



Withstands temp. up to 93°C

CPVC PIPES IN SDR-11 & 13.5 AS PER ASTM D2846 IN CTS (COPPER TUBE SIZE)



cPVC SDR-11

Size (Inch)	Size mm	3Mtr. Pack	5Mtr. Pack	M.R.P. 3Mtr.	M.R.P. 5Mtr.
1/2"	15	50	50	187.00	312.00
3/4"	20	50	30	283.00	472.00
1"	25	30	20	451.00	752.00
1.1/4"	32	20	10	693.00	1155.00
1.1/2"	40	15	10	985.00	1642.00
2"	50	10	5	1685.00	2808.00
2.1/2"	65	6	6	4190.00	6983.00
3"	80	5	5	5575.00	9292.00

cPVC SDR-13.5

Size (Inch)	Size mm	3Mtr. Pack	5Mtr. Pack	M.R.P. 3Mtr.	M.R.P. 5Mtr.
1/2"	15	50	50	157.00	262.00
3/4"	20	50	30	251.00	418.00
1"	25	30	20	381.00	635.00
1.1/4"	32	20	10	575.00	958.00
1.1/2"	40	15	10	815.00	1358.00
2"	50	10	5	1405.00	2342.00
2.1/2"	65	6	6	3065.00	5108.00
3"	80	5	5	3955.00	6592.00

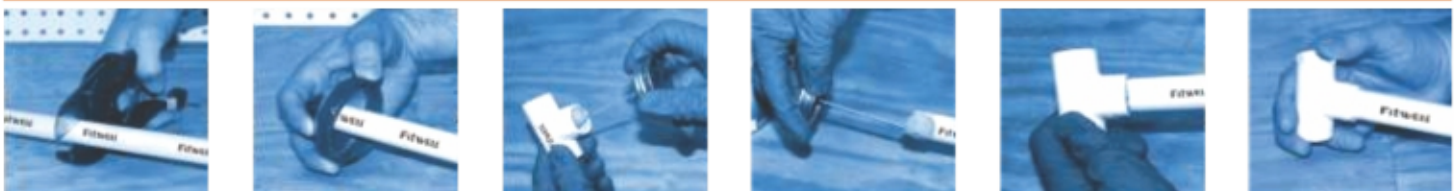
STANDARDS

- ASTM D 1784 :** Specification for Rigid cPVC Compounds
- ASTM D 2846 :** Specification for Rigid cPVC Plastic & Fittings for Hot & Cold Water Distribution
- ASTM F 493 :** Specification for Solvent Cement for cPVC Plastic Pipes & Fittings

Pressure Rating of cPVC Pipes (SDR-11 & SDR-13.5)

SIZE	Pipes Size in Inch	1/2"	3/4"	1"	1 1/4"	1 1/2"	2"
	Pipes Size in mm	15	20	25	32	40	50
CLASS 2 SDR-13.5	Average Outer Diameter (mm)	15.90	22.20	28.60	34.90	41.30	54.00
	Min. Wall Thickness (mm)	1.40	1.65	2.12	2.59	3.06	4.00
	Pressure Rating (kg./cm ²) of 23°C	22.50	22.50	22.50	22.50	22.50	22.50
	Pressure Rating (kg./cm ²) of 82°C	5.60	5.60	5.60	5.60	5.60	5.60
CLASS 1 SDR-11	Average Outer Diameter (mm)	15.90	22.20	28.60	34.60	41.30	54.00
	Min. Wall Thickness (mm)	1.73	2.03	2.59	3.18	3.76	4.90
	Pressure Rating (kg./cm ²) of 23°C	28.10	28.10	28.10	28.10	28.10	28.10
	Pressure Rating (kg./cm ²) of 82°C	7.00	7.00	7.00	7.00	7.00	7.00

INSTALLATION METHOD OF 'FITWELL' cPVC & uPVC PIPES & FITTINGS



Terms & Conditions :

- The above prices are Ex-Factory, Freight will be charged extra as applicable. • Taxes : GST will be Extra Charged. • Advance Payment.
- Payment should be deposited in our account against Perform a Invoice in terms & conditions of Perform a Invoice • Late payment interest will be charged @ 18% Flat.
- Supply will be made within 7-10 days after confirmation of Performa Invoice. • The Company reserves the right to revise the prices without any prior intimation.
- All Disputes are subject to Rajkot jurisdiction only.

The Complete **Plumbing** solution

UPVC PIPES & FITTINGS

FOR COLD WATER

Application :

- Cold Water Plumbing in Building.
- Swimming Pools.
- Corrosive Fluid Transportation.
- Water Distribution Mains.
- Industrial Process Lines.

One Stop for multiple plumbing solution under one roof



PRODUCT FEATURES:



Light Weight



Non Toxic



UV Resistant



Effective Cost



Lead Free

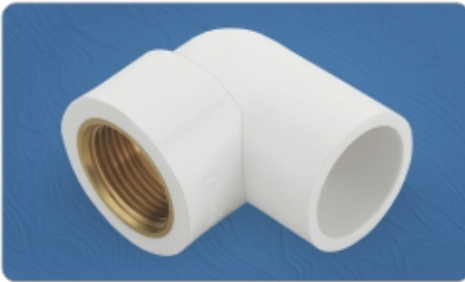


Easy to Install



Cold Water Suit.

Lead Free uPVC Fittings in SCH-80 as per ASTM D2467



BRASS ELBOW

Size (Inch)	Size mm	Std.Pkd.	Qty./Box	M.R.P.
1/2"	15	50	350	38.00
3/4"	20	25	225	61.10
1"	25	20	120	95.00
3/4"x1/2"	20x15	40	280	46.00
1"x1/2"	25x15	25	175	50.00
1"x3/4"	25x20	20	160	97.00



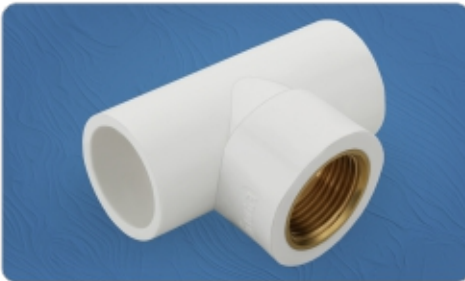
BRASS F.T.A.

Size (Inch)	Size mm	Std.Pkd.	Qty./Box	M.R.P.
1/2"	15	50	500	36.00
3/4"	20	50	300	58.50
1"	25	25	125	96.00
1.1/4"	32	20	100	190.00
1.1/2"	40	12	48	270.00
2"	50	9	45	330.00
2.1/2"	65	-	9	850.00
3"	80	-	5	1280.00
3/4"x1/2"	20x15	50	400	41.50
1"x1/2"	25x15	40	280	51.00
1"x3/4"	25x20	30	270	72.00



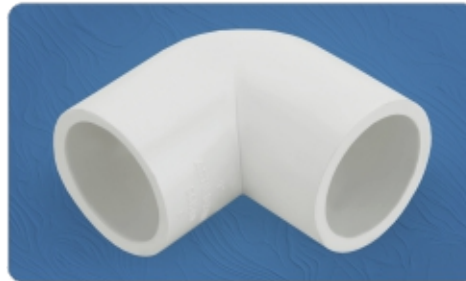
BRASS M.T.A.

Size (Inch)	Size mm	Std.Pkd.	Qty./Box	M.R.P.
1/2"	15	50	400	51.00
3/4"	20	25	275	80.50
1"	25	25	125	126.00
1.1/4"	32	20	100	265.00
1.1/2"	40	12	48	330.00
2"	50	9	36	475.00
2.1/2"	65	-	8	1345.00
3"	80	-	5	1530.00
3/4"x1/2"	20x15	50	350	63.50
1"x1/2"	25x15	30	270	65.50
1"x3/4"	25x20	25	225	92.00



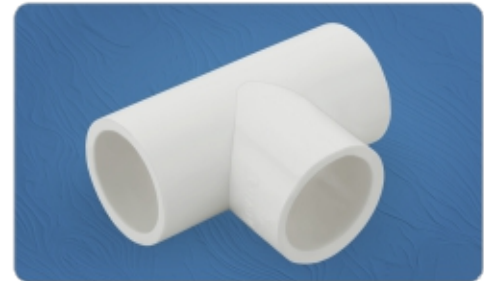
BRASS TEE

Size (Inch)	Size mm	Std.Pkd.	Qty./Box	M.R.P.
1/2"	15	35	245	42.00
3/4"	20	25	175	66.00
1"	25	15	105	116.00
3/4"x1/2"	20x15	25	200	54.50
1"x1/2"	25x15	20	140	57.50
1"x3/4"	25x20	15	105	106.80



ELBOW

Size (Inch)	Size mm	Std.Pkd.	Qty./Box	M.R.P.
1/2"	15	60	480	7.95
3/4"	20	40	280	12.50
1"	25	25	150	19.60
1.1/4"	32	10	90	34.30
1.1/2"	40	10	60	45.50
2"	50	8	40	71.30
2.1/2"	65	-	44	160.00
3"	80	-	24	253.00



EQUAL TEE

Size (Inch)	Size mm	Std.Pkd.	Qty./Box	M.R.P.
1/2"	15	50	300	12.60
3/4"	20	25	175	16.80
1"	25	25	125	26.60
1.1/4"	32	10	60	47.40
1.1/2"	40	6	48	60.50
2"	50	4	32	95.50
2.1/2"	65	-	30	203.00
3"	80	-	19	371.00



COUPLER

Size (Inch)	Size mm	Std.Pkd.	Qty./Box	M.R.P.
1/2"	15	100	600	6.95
3/4"	20	60	420	9.10
1"	25	30	210	14.60
1.1/4"	32	20	120	23.50
1.1/2"	40	15	105	28.30
2"	50	9	63	40.30
2.1/2"	65	-	72	93.00
3"	80	-	48	130.00



M.T.A.

Size (Inch)	Size mm	Std.Pkd.	Qty./Box	M.R.P.
1/2"	15	100	900	6.30
3/4"	20	50	500	8.50
1"	25	50	300	11.80
1.1/4"	32	20	180	18.50
1.1/2"	40	24	144	23.50
2"	50	18	90	34.20
2.1/2"	65	-	48	139.00
3"	80	-	48	161.00



F.T.A.

Size (Inch)	Size mm	Std.Pkd.	Qty./Box	M.R.P.
1/2"	15	100	700	6.95
3/4"	20	75	450	9.50
1"	25	40	240	13.60
1.1/4"	32	20	160	22.30
1.1/2"	40	20	120	27.50
2"	50	15	75	41.80
2.1/2"	65	-	48	151.00
3"	80	-	48	169.00

Lead Free uPVC Fittings in SCH-80 as per ASTM D2467



UNION

Size (Inch)	Size mm	Std.Pkd.	Qty./Box	M.R.P.
1/2"	15	50	300	21.00
3/4"	20	25	175	32.00
1"	25	15	120	44.00
1.1/4"	32	10	70	63.00
1.1/2"	40	6	54	87.00
2"	50	6	36	135.00
2.1/2"	65	-	36	310.00
3"	80	-	25	460.00



END CAP

Size (Inch)	Size mm	Std.Pkd.	Qty./Box	M.R.P.
1/2"	15	100	900	5.95
3/4"	20	100	600	8.00
1"	25	50	400	10.40
1.1/4"	32	40	280	18.50
1.1/2"	40	20	160	21.50
2"	50	15	120	34.50
2.1/2"	65	-	45	76.00
3"	80	-	40	101.00



ELBOW 45°

Size (Inch)	Size mm	Std.Pkd.	Qty./Box	M.R.P.
1/2"	15	60	540	7.30
3/4"	20	40	280	11.80
1"	25	25	175	18.50
1.1/4"	32	15	105	32.00
1.1/2"	40	15	90	44.00
2"	50	10	50	70.00



TANK CONT.

Size (Inch)	Size mm	Std.Pkd.	Qty./Box	M.R.P.
1/2"	15	30	360	18.95
3/4"	20	40	280	23.20
1"	25	25	150	33.75
1.1/4"	32	10	90	49.65
1.1/2"	40	8	72	70.25
2"	50	6	42	95.25
2.1/2"	65	5	-	350.00
3"	80	5	-	450.00



PIPE TANK NIPPLE

Size (Inch)	Size mm	Std.Pkd.	Qty./Box	M.R.P.
1/2"	15	30	240	19.45
3/4"	20	25	175	24.00
1"	25	20	120	34.25
1.1/4"	32	10	80	50.15
1.1/2"	40	8	64	71.00
2"	50	6	42	96.00



SOCKET TANK NIPPLE

Size (Inch)	Size mm	Std.Pkd.	Qty./Box	M.R.P.
1/2"	15	50	400	20.40
3/4"	20	40	240	25.30
1"	25	25	150	31.50
1.1/4"	32	20	120	55.50
1.1/2"	40	20	100	68.00
2"	50	10	50	85.00
2.1/2"	65	5	-	310.00
3"	80	5	-	450.00



STEP OVER BEND

Size (Inch)	Size mm	Std.Pkd.	Qty./Box	M.R.P.
1/2"	15	20	180	34.00
3/4"	20	15	120	46.00
1"	25	10	50	67.00
1.1/4"	32	6	36	112.00
1.1/2"	40	5	30	144.00
2"	50	4	8	214.00



LONG BEND

Size (Inch)	Size mm	Std.Pkd.	Qty./Box	M.R.P.
1/2"	15	20	180	31.00
3/4"	20	15	120	43.00
1"	25	10	50	64.00
1.1/4"	32	6	36	105.00
1.1/2"	40	5	30	137.00
2"	50	4	8	207.00



END PLUG

Size (Inch)	Size mm	Std.Pkd.	Qty./Box	M.R.P.
1/2"	15	100	800	5.95
3/4"	20	100	1000	6.90

Lead Free uPVC Fittings in SCH-80 as per ASTM D2467



REDUCER BUSH

Size (Inch)	Size mm	Std.Pkd.	Qty./Box	M.R.P.
3/4"x1/2"	20x15	100	1000	5.30
1"x1/2"	25x15	50	600	9.00
1"x3/4"	25x20	50	600	8.00
1.1/4"x1/2"	32x15	50	350	18.00
1.1/4"x3/4"	32x20	50	350	17.00
1.1/4"x1"	32x25	50	300	12.50
1.1/2"x1/2"	40x15	35	245	20.00
1.1/2"x3/4"	40x20	35	245	19.00
1.1/2"x1"	40x25	35	245	18.00
1.1/2"x1.1/4"	40x32	35	245	13.50
2"x1/2"	50x15	20	140	26.50
2"x3/4"	50x20	20	140	28.00
2"x1"	50x25	20	140	29.00
2"x1.1/4"	50x32	20	140	30.00
2"x1.1/2"	50x40	20	140	27.00



REDUCER COUPLER

Size (Inch)	Size mm	Std.Pkd.	Qty./Box	M.R.P.
3/4"x1/2"	20x15	70	420	9.10
1"x1/2"	25x15	50	300	12.50
1"x3/4"	25x20	40	240	20.50
1.1/4"x1/2"	32x15	35	210	22.50
1.1/4"x3/4"	32x20	30	210	20.00
1.1/4"x1"	32x25	20	160	21.30
1.1/2"x1/2"	40x15	24	168	28.00
1.1/2"x3/4"	40x20	24	120	30.00
1.1/2"x1"	40x25	24	144	31.50
1.1/2"x1.1/4"	40x32	15	75	35.00
2"x1/2"	50x15	24	120	42.80
2"x3/4"	50x20	24	72	44.30
2"x1"	50x25	24	120	45.40
2"x1.1/4"	50x32	24	72	46.30
2"x1.1/2"	50x40	24	72	47.80
2.1/2"X2"	65X50	-	72	136.00
3"X2"	80X50	-	72	155.00
3"X2.1/2"	80X65	-	72	180.00



REDUCER TEE

Size (Inch)	Size mm	Std.Pkd.	Qty./Box	M.R.P.
3/4"x1/2"	20x15	30	180	22.00
1"x1/2"	25x15	20	140	25.00
1"x3/4"	25x20	20	120	28.80
1.1/4"x1/2"	32x15	10	70	50.50
1.1/4"x3/4"	32x20	10	70	55.50
1.1/4"x1"	32x25	10	70	60.50
1.1/2"x1/2"	40x15	8	56	55.00
1.1/2"x3/4"	40x20	10	60	62.00
1.1/2"x1"	40x25	5	50	75.50
1.1/2"x1.1/4"	40x32	5	45	82.50
2"x1/2"	50x15	4	32	84.50
2"x3/4"	50x20	4	32	90.50
2"x1"	50x25	4	32	97.00
2"x1.1/4"	50x32	4	32	103.30
2"x1.1/2"	50x40	4	32	108.50



METAL CLAMP

Size (Inch)	Size mm	Std.Pkd.	Qty./Box	M.R.P.
1/2"	21	100	1000	5.50
3/4"	27	100	800	6.60
1"	34	100	600	7.90
1.1/4"	42	100	500	9.30
1.1/2"	49	100	400	10.25
2"	61	100	300	11.00
2.1/2"	65	50	250	13.00
3"	80	50	200	16.00



NAIL CLAMP

Size (Inch)	Size mm	Std.Pkd.	Qty./Box	M.R.P.
1/2"	21	100	1000	5.00
3/4"	27	100	800	8.00
1"	34	100	600	10.00
1.1/4"	42	100	500	13.00
1.1/2"	49	100	400	18.00
2"	61	100	300	27.00



NON RETURN VALVE

Size (Inch)	Size mm	Std.Pkd.	Qty./Box	M.R.P.
1/2"	21	15	75	135.00
3/4"	27	10	80	142.00
1"	34	10	60	149.00

PRODUCT FEATURES:



Light Weight



Non Toxic



UV Resistant



Effective Cost



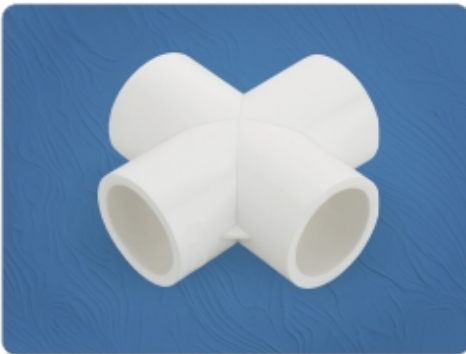
Lead Free



Easy to Install



Cold Water Suit

Lead Free uPVC Fittings in SCH-80 as per ASTM D2467

CROSS TEE

Size (Inch)	Size mm	Std.Pkd.	Qty./Box	M.R.P.
1/2"	15	35	210	17.30
3/4"	20	25	125	23.70
1"	25	15	75	39.00
1.1/4"	32			55.50


REDUCER ELBOW

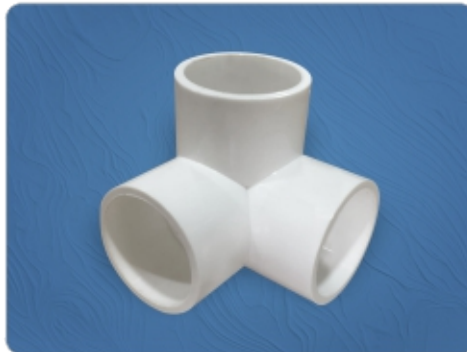
Size (Inch)	Size mm	Std.Pkd.	Qty./Box	M.R.P.
3/4"x1/2"	20x15	50	250	17.50
1"x1/2"	25x15	25	200	20.00
1"x3/4"	25x20	25	175	22.50


THREAD ELBOW

Size (Inch)	Size mm	Std.Pkd.	Qty./Box	M.R.P.
1/2"	15	60	480	16.00
3/4"	20	40	280	23.00
1"	25	25	150	-

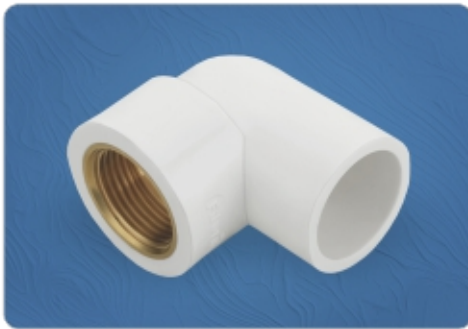

SOLVENT CEMENT

Size Ml. (Tin)	Inner Pack.	Master Pack.	M.R.P.
59 ml.	30	240	100.00
118 ml.	24	144	145.00
237 ml.	24	96	240.00
473 ml.	12	72	390.00
946 ml.	6	36	660.00


UPVC THREE WAY ELBOW

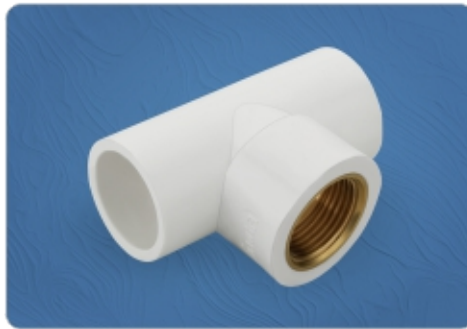
Size (Inch)	Size mm	Std.Pkd.	Qty./Box	M.R.P.
1/2"	15	35	210	12.00
3/4"	20	25	125	25.00
1"	25	15	75	29.00

Lead Free uPVC Fittings in S-40 as per ASTM D2467 (LIGHT WEIGHT)



BRASS ELBOW

Size (Inch)	Size mm	Std.Pkd.	Qty./Box	M.R.P.
1/2"	15	50	350	27.10



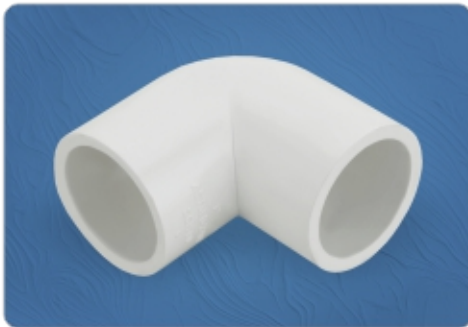
BRASS TEE

Size (Inch)	Size mm	Std.Pkd.	Qty./Box	M.R.P.
1/2"	15	35	245	31.00



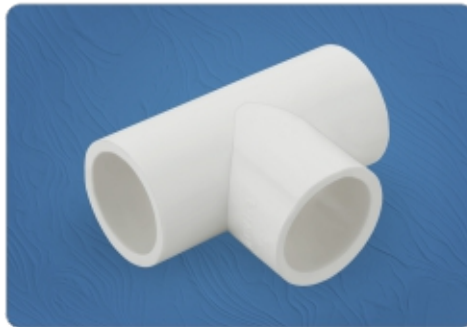
BRASS F.T.A.

Size (Inch)	Size mm	Std.Pkd.	Qty./Box	M.R.P.
1/2"	15	50	500	24.55
3/4" x 1/2"	20	50	400	23.50



ELBOW

Size (Inch)	Size mm	Std.Pkd.	Qty./Box	M.R.P.
1/2"	15	60	480	6.20
3/4"	20	40	280	9.10
1"	25	25	150	16.00



EQUAL TEE

Size (Inch)	Size mm	Std.Pkd.	Qty./Box	M.R.P.
1/2"	15	50	300	9.10
3/4"	20	25	175	13.40
1"	25	15	105	21.22



END CAP

Size (Inch)	Size mm	Std.Pkd.	Qty./Box	M.R.P.
1/2"	15	50	1000	3.30
1"	25	50	400	8.10



COUPLER

Size (Inch)	Size mm	Std.Pkd.	Qty./Box	M.R.P.
1/2"	15	100	600	4.30
3/4"	20	60	420	6.90
1"	25	30	210	10.40



Light Weight



High Strength



UV Resistant



Effective Cost



Corrosion Resistant



Easy to Install



Hot & Cold Water



uPVC Pipes (SCH-40, SCH-80) ASTM D1785



uPVC SCH-40

Size (Inch)	Size mm	3Mtr. Pack	6Mtr. Pack	M.R.P. 3Mtr.	M.R.P. 6Mtr.
1/2"	15	50	25	135.00	270.00
3/4"	20	40	20	175.00	350.00
1"	25	25	15	260.00	520.00
1.1/4"	32	15	10	365.00	730.00
1.1/2"	40	15	10	445.00	890.00
2"	50	10	5	585.00	1170.00
2.1/2"	65	5	3	950.00	1900.00
3"	80	4	3	1185.00	2370.00

uPVC SCH-80

Size (Inch)	Size mm	3Mtr. Pack	6Mtr. Pack	M.R.P. 3Mtr.	M.R.P. 6Mtr.
1/2"	15	50	25	165.00	330.00
3/4"	20	40	20	217.00	434.00
1"	25	25	15	325.00	650.00
1.1/4"	32	15	10	485.00	970.00
1.1/2"	40	15	10	615.00	1230.00
2"	50	10	5	755.00	1510.00
2.1/2"	65	5	3	1150.00	2300.00
3"	80	4	3	1440.00	2880.00

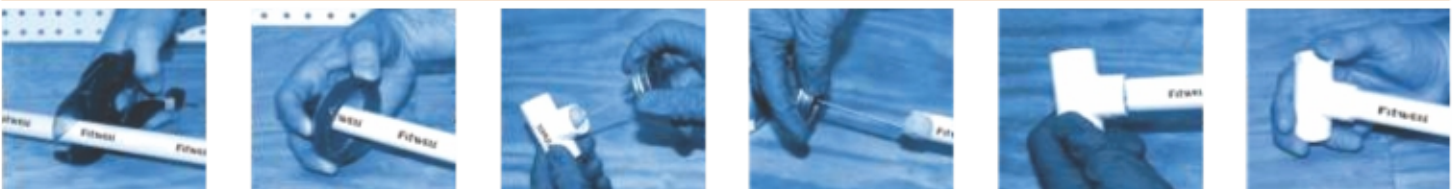
STANDARDS

- ASTM D 1785 :** PVC Plastic Pipes, SCH-40 & SCH-80.
- ASTM D 2467 :** Socket Type PVC Plastic Fittings, SCH-80.
- ASTM D 2564 :** Solvent Cements for Plastic Pipes & Fittings.

Pressure Rating of uPVC Pipes (SCH-40 & SCH-80)

SIZE	Pipes Size in Inch	1/2"	3/4"	1"	1 1/4"	1 1/2"	2"	2 1/2"	3"
	Pipes Size in mm	15	20	25	32	40	50	65	80
SCH-40	Average Outer Diameter (mm)	21.34	26.67	33.40	42.16	48.26	60.32	73.02	88.90
	Min. Wall Thickness (mm)	2.77	2.87	3.38	3.56	3.68	3.91	5.16	5.49
	Max. Work Pressure Rating (kg./cm ²) at 23°C	42.19	33.75	31.64	26.01	23.20	19.69	21.09	18.28
	Burst Pressure (kg./cm ²)	131.70	106.20	99.30	81.40	73.10	61.40	66.90	57.90
SCH-80	Average Outer Diameter (mm)	21.34	26.67	33.40	42.16	48.26	60.32	73.02	88.90
	Min. Wall Thickness (mm)	3.73	3.91	4.55	4.85	5.08	5.54	7.01	7.62
	Max. Work Pressure Rating (kg./cm ²) at 23°C	59.76	48.51	44.29	36.56	33.04	28.12	29.53	26.01
	Burst Pressure (kg./cm ²)	187.60	151.70	139.30	114.50	104.10	88.90	93.80	82.70

INSTALLATION METHOD OF 'FITWELL' cPVC & uPVC PIPES & FITTINGS



Terms & Conditions :

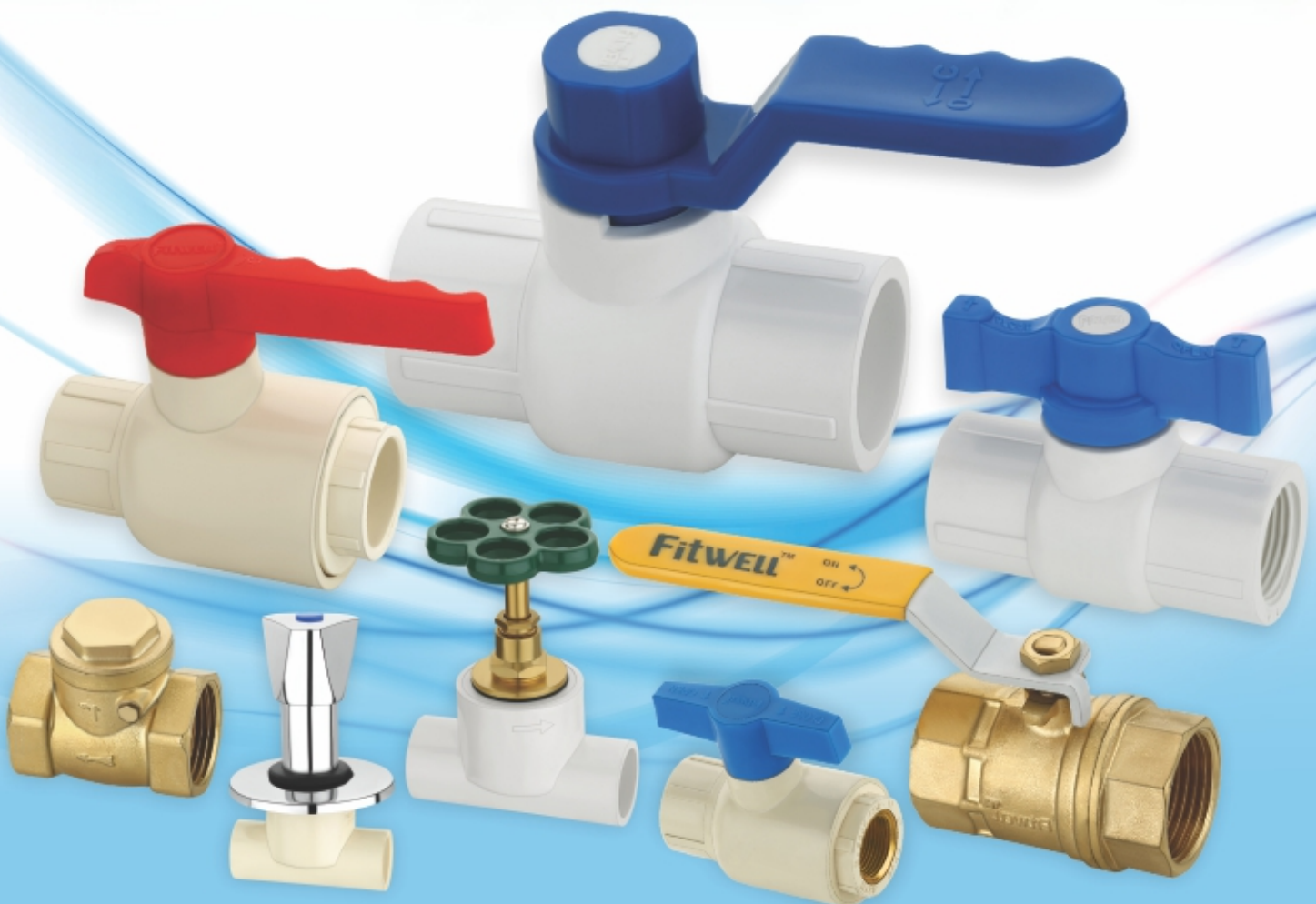
- The above prices are Ex-Factory, Freight will be charged extra as applicable. • Taxes : GST will be Extra Charged. • Advance Payment.
- Payment should be deposited in our account against Perform a Invoice in terms & conditions of Perform a Invoice • Late payment interest will be charged @ 18% Flat.
- Supply will be made within 7-10 days after confirmation of Perform a Invoice. • The Company reserves the right to revise the prices without any prior intimation.
- All Disputes are subject to Rajkot jurisdiction only.

The Complete **Plumbing** solution

PVC & BRASS VALVES

FOR HOT & COLD WATER

- One-Piece Molded PVC Body
- Made Using 100% Virgin Raw Material.
- Unique Compact Design. • 100% Factory Tested
- Durable to Last a Lifetime
- Easy and Reliable Solvent Cement Type Joints.



PRODUCT FEATURES:



Light Weight



High Strength



UV Resistant



Effective Cost



Corrosion Resistant



Easy to Install



Hot & Cold Water

cPVC, uPVC & BRASS VALVES



cPVC BALL VALVE

Size (Inch)	Size mm	Std.Pkd.	Qty./Box	M.R.P.
1/2"	15	1	-	-
3/4"	20	1	-	123.00
1"	25	1	-	203.00
1.1/4"	32	1	-	375.00
1.1/2"	40	1	-	565.00
2"	50	1	-	830.00



cPVC BRASS THREAD BALL VALVE

Size (Inch)	Std.Pkd.	Qty./Box	M.R.P.	BRASS
3/4"x1/2"	1	-	153.00	1 Side
1/2"x1/2"	1	-	183.00	2 Side
1"x3/4"	1	-	250.00	1 Side
3/4"x3/4"	1	-	298.00	2 Side
1.1/4"x1"	1	-	420.00	1 Side
1"x1"	1	-	488.00	2 Side
1.1/2"x1.1/4"	1	-	668.00	1 Side
1.1/4"x1.1/4"	1	-	790.00	2 Side
2"x1.1/2"	1	-	963.00	1 Side
1.1/2"x1.1/2"	1	-	1125.00	2 Side



cPVC BRASS THREAD BALL VALVE LONG HANDLE

Size (Inch)	Std.Pkd.	Qty./Box	M.R.P.	BRASS
3/4"x1/2"	1	-	158.00	1 Side
1/2"x1/2"	1	-	188.00	2 Side
1"x3/4"	1	-	255.00	1 Side
3/4"x3/4"	1	-	303.00	2 Side
1.1/4"x1"	1	-	425.00	1 Side
1"x1"	1	-	493.00	2 Side
1.1/2"x1.1/4"	1	-	675.00	1 Side
1.1/4"x1.1/4"	1	-	795.00	2 Side
2"x1.1/2"	1	-	980.00	1 Side
1.1/2"x1.1/2"	1	-	1143.00	2 Side



cPVC LONG HANDEL BALL VALVE

Size (Inch)	Size mm	Std.Pkd.	Qty./Box	M.R.P.
1/2"	15	1	-	-
3/4"	20	1	-	128.00
1"	25	1	-	208.00
1.1/4"	32	1	-	380.00
1.1/2"	40	1	-	570.00
2"	50	1	-	835.00



cPVC CONCEALED VALVE

Size (Inch)	Size mm	Qty./Box	M.R.P.
3/4"	20	2	753.00
1"	25	2	762.00



cPVC STOP VALVE

Size (Inch)	Size mm	Qty./Box	M.R.P.
3/4"	20	2	458.00
1"	25	2	467.00



CPVC CONCEALED VALVE (SWEEP TYPE)

Size (Inch)	Size mm	Std.Pkd.	Qty./Box	M.R.P.
3/4"	20	2	40	653.00
1"	25	2	40	-



uPVC BALL VALVE

Size (Inch)	Size mm	Std.Pkd.	Qty./Box	M.R.P.
1/2"	15	1	-	38.00
3/4"	20	1	-	55.00
1"	25	1	-	80.00
1.1/4"	32	1	-	130.00
1.1/2"	40	1	-	183.00
2"	50	1	-	288.00
2.1/2"	65	1	-	690.00
3"	80	1	-	1210.00



uPVC LONG HANDEL BALL VALVE

Size (Inch)	Size mm	Std.Pkd.	Qty./Box	M.R.P.
1/2"	15	1	-	40.00
3/4"	20	1	-	58.00
1"	25	1	-	83.00
1.1/4"	32	1	-	133.00
1.1/2"	40	1	-	185.00
2"	50	1	-	293.00

cPVC, uPVC & BRASS VALVES



uPVC BALL VALVE THREAD

Size (Inch)	Size mm	Std.Pkd.	Qty./Box	M.R.P.
1/2"	15	1	-	40.00
3/4"	20	1	-	58.00
1"	25	1	-	85.00
1.1/4"	32	1	-	138.00
1.1/2"	40	1	-	190.00
2"	50	1	-	298.00



uPVC LONG HANDLE BALL VALVE THREAD

Size (Inch)	Size mm	Std.Pkd.	Qty./Box	M.R.P.
1/2"	15	1	-	43.00
3/4"	20	1	-	60.00
1"	25	1	-	88.00
1.1/4"	32	1	-	140.00
1.1/2"	40	1	-	193.00
2"	50	1	-	303.00



uPVC BALL VALVE UNION TYPE

Size (Inch)	Size mm	Std.Pkd.	Qty./Box	M.R.P.
1/2"	15	1	-	33.00
3/4"	20	1	-	53.00
1"	25	1	-	87.00
1.1/4"	32	1	-	155.00
1.1/2"	40	1	-	226.00
2"	50	1	-	332.00



uPVC BALL VALVE LONG HANDLE UNION TYPE

Size (Inch)	Size mm	Std.Pkd.	Qty./Box	M.R.P.
1/2"	15	1	-	34.00
3/4"	20	1	-	54.00
1"	25	1	-	88.00
1.1/4"	32	1	-	156.00
1.1/2"	40	1	-	227.00
2"	50	1	-	334.00



uPVC BRASS THREAD BALL VALVE LONG HANDLE

Size (Inch)	Std.Pkd.	Qty./Box	M.R.P.	BRASS
3/4"x1/2"	1	-	98.00	1 Side
1/2"x1/2"	1	-	130.00	2 Side
1"x3/4"	1	-	143.00	1 Side
3/4"x3/4"	1	-	198.00	2 Side



uPVC BRASS THREAD BALL VALVE

Size (Inch)	Std.Pkd.	Qty./Box	M.R.P.	BRASS
3/4"x1/2"	1	-	95.00	1 Side
1/2"x1/2"	1	-	128.00	2 Side
1"x3/4"	1	-	143.00	1 Side
3/4"x3/4"	1	-	195.00	2 Side



uPVC CONCEALED VALVE

Size (Inch)	Size mm	Qty./Box	M.R.P.
1/2"	15	2	750.00
3/4"	20	2	760.00
1"	25	2	860.00



uPVC STOP VALVE

Size (Inch)	Size mm	Qty./Box	M.R.P.
1/2"	15	2	460.00
3/4"	20	2	466.00
1"	25	2	570.00



GRAY AGRICULTURE BALL VALVE

Size (Inch)	Size mm	Std.Pkd.	Qty./Box	M.R.P.
1/2"	15	1	100	40.00
3/4"	20	1	50	51.00
1"	25	1	50	63.00
1.1/4"	32	1	25	100.00
1.1/2"	40	1	25	118.00
2"	50	1	20	177.00
2.1/2"	65	1	15	243.00
3"	80	1	10	375.00
4"	100	1	5	645.00

cPVC, uPVC & BRASS VALVES



BRASS CONTROL VALVE

Size (Inch)	Size mm	Std.Pkd.	Qty./Box	M.R.P.
1/2"	15	1	50	1188.00
3/4"	20	1	50	1384.00
1"	25	1	50	1785.00



BRASS GATE VALVE

Size (Inch)	Size mm	Std.Pkd.	Qty./Box	M.R.P.
1/2"	15	1	50	439.00
3/4"	20	1	50	679.00
1"	25	1	50	1099.00



BRASS FORGED CHECK VALVE

Size (Inch)	Size mm	Std.Pkd.	Qty./Box	M.R.P.
1/2"	15	1	100	235.00
3/4"	20	1	100	346.00
1"	25	1	100	440.00
1.1/4"	32	1	50	874.00
1.1/2"	40	1	50	1158.00
2"	50	1	50	1860.00



BRASS FORGED BALL VALVE

Size (Inch)	Size mm	Std.Pkd.	Qty./Box	M.R.P.
1/4"	-	5	100	285.00
3/8"	-	5	100	300.00
1/2"	15	2	100	314.00
3/4"	20	2	100	520.00
1"	25	2	100	630.00
1.1/4"	32	1	50	1730.00
1.1/2"	40	1	50	2044.00
2"	50	1	50	3146.00



uPVC BRASS UNION BALL VALVE

Size (Inch)	Size mm	Std.Pkd.	Qty./Box	M.R.P.
1/2"	-	-	100	573.00
3/4"	-	-	100	761.00
1"	-	-	50	1245.00
1.1/4"	-	-	50	1646.00
1.1/2"	-	-	50	2082.00
2"	-	-	50	4205.00



CPVC BRASS UNION BALL VALVE

Size (Inch)	Size mm	Weight(Kg.)	Qty./Box	M.R.P.
3/4"	20	0.275	100	576.00
1"	25	0.365	100	765.00
1.1/4"	32	0.780	50	1706.00
1.1/2"	40	0.975	50	2132.00
2"	50	1.900	50	4254.00



BRASS FLUSH VALVE

SIZE (MM)	STD.PKD.	M.R.P.
25	2	1430.00



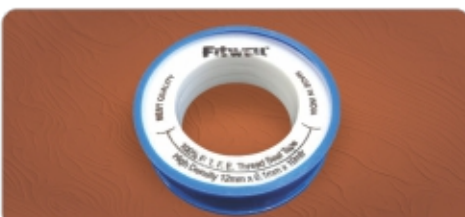
BRASS CONCEALED VALVE

SIZE (MM)	STD.PKD.	M.R.P.
15	2	1145.00



NOZZLE BIB COCK

SIZE (MM)	STD.PKD.	M.R.P.
15	4	418.00



PTFE THREAD SEALING TAP

Size mm	Std.Pkd.	Qty./Box	M.R.P.
12	10	250	23.00



BRASS EXTENSION NIPPLE

Size (Inch)	Size mm	Std.Pkd.	Qty./Box	M.R.P.
1"	25	3	72	64.00
1.1/2"	40	2	48	96.00
2"	50	1	24	128.00
2.5"	-	1	24	160.00
3"	-	1	12	192.00
4"	-	1	12	256.00
6"	-	1	12	384.00
Hex	-	2	48	70.00

The Complete **Plumbing** solution

SWR PIPES & FITTINGS

For Sewerage Waste & Rain Water

Application :

- Sewage & Waste Water Lines.
- Rainwater Drainage.
- Residential Purpose.
- Industrial Use.
- Offices Purpose Use.



PRODUCT FEATURES:



Light Weight



High Strength



UV Resistant



Effective Cost



Yellow Ring
Co-Moulded Technology

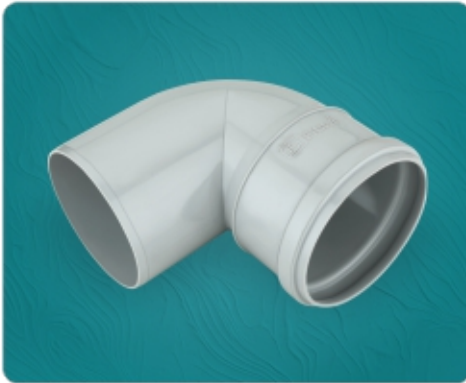


Easy to Install



Leakproof Joints

SWR (SEWERAGE WASTE & RAIN-WATER) FITTINGS (YELLOW RING FITTED)



BEND 87.5°

SIZE (MM)	BOX	M.R.P.
75	55	53.00
90	60	76.00
110	34	103.00
160	12	322.00



BEND 87.5° (DOOR)

SIZE (MM)	BOX	M.R.P.
75	45	75.00
90	60	98.00
110	28	143.00
160	11	400.00



SHOE BEND 45°

SIZE (MM)	BOX	M.R.P.
75	75	44.00
90	80	64.00
110	42	93.00
160	13	262.00



SINGLE TEE

SIZE (MM)	BOX	M.R.P.
75	72	82.00
90	40	114.00
110	24	142.00
160	7	470.00



SINGLE TEE (DOOR)

SIZE (MM)	BOX	M.R.P.
75	51	106.00
90	40	138.00
110	20	182.00
160	6	553.00



DOUBLE TEE

SIZE (MM)	BOX	M.R.P.
75	50	97.80
110	20	198.00



DOUBLE TEE (DOOR)

SIZE (MM)	BOX	M.R.P.
75	40	125.00
110	16	215.00



COUPLER

SIZE (MM)	BOX	M.R.P.
75	90	50.00
110	60	79.00
160	18	250.00



SINGLE Y

SIZE (MM)	BOX	M.R.P.
75	50	103.20
110	20	192.00

SWR (SEWERAGE WASTE & RAIN-WATER) FITTINGS (YELLOW RING FITTED)



SINGLE Y (DOOR)

SIZE (MM)	BOX	M.R.P.
75	45	118.20
110	17	235.00



DOUBLE Y

SIZE (MM)	BOX	M.R.P.
75	35	159.80
110	11	275.80



DOUBLE Y (DOOR)

SIZE (MM)	BOX	M.R.P.
75	26	169.80
110	10	300.00



REDUCER

SIZE (MM)	BOX	M.R.P.
110 X 75	64	68.60



REDUCER TEE

SIZE (MM)	BOX	M.R.P.
110 x 75	33	130.00
160 x 90	-	-
160 x 110	8	460.00
160 x 140	-	-



REDUCER TEE (DOOR)

SIZE (MM)	BOX	M.R.P.
110 X 75	24	166.00




CLEANSING PIPE

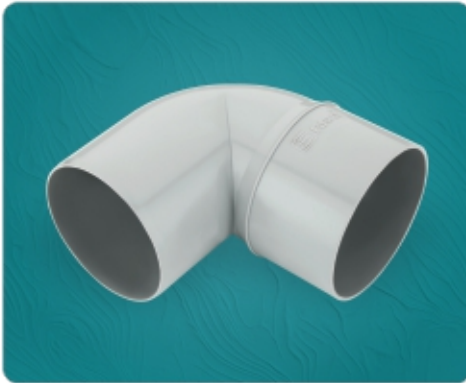
SIZE (MM)	BOX	M.R.P.
75	96	78.60
110	32	148.60



PP SWR RING (Fix M.R.P.)

SIZE (MM)	BOX	M.R.P.
75	1000	4.50
110	500	5.50

 SWR (SEWERAGE WASTE & RAIN-WATER) FITTINGS (SELF FIT)



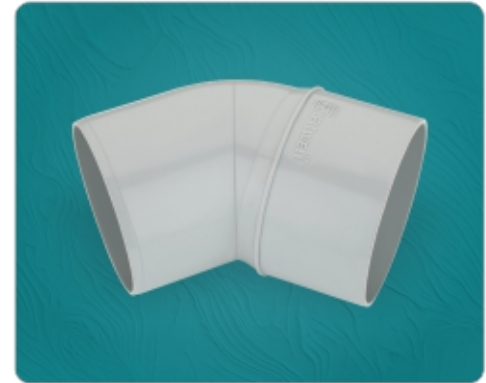
BEND 87.5°

SIZE (MM)	BOX	M.R.P.
75	55	48.00
90	60	68.00
110	36	96.00
160	12	300.00



BEND 87.5° (DOOR)

SIZE (MM)	BOX	M.R.P.
75	45	71.00
90	60	90.00
110	32	135.00
160	11	360.00



SHOE BEND 45°

SIZE (MM)	BOX	M.R.P.
75	75	39.00
90	80	55.00
110	44	88.00
160	13	240.00



SINGLE TEE

SIZE (MM)	BOX	M.R.P.
75	72	73.00
90	40	98.00
110	24	131.00
160	7	430.00



SINGLE TEE (DOOR)

SIZE (MM)	BOX	M.R.P.
75	60	95.00
90	40	121.00
110	24	166.00
160	6	500.00



DOUBLE TEE

SIZE (MM)	BOX	M.R.P.
75	50	80.00
110	20	174.00



DOUBLE TEE (DOOR)

SIZE (MM)	BOX	M.R.P.
75	40	110.00
110	16	215.00



COUPLER

SIZE (MM)	BOX	M.R.P.
75	90	32.00
110	60	62.00
160	18	210.00



SINGLE Y

SIZE (MM)	BOX	M.R.P.
75	50	90.00
110	21	182.00

SWR (SEWERAGE WASTE & RAIN-WATER) FITTINGS (SELF FIT)


SINGLE Y (DOOR)

SIZE (MM)	BOX	M.R.P.
75	45	108.00
110	17	226.00


DOUBLE Y

SIZE (MM)	BOX	M.R.P.
75	35	130.00
110	11	250.00


DOUBLE Y (DOOR)

SIZE (MM)	BOX	M.R.P.
75	26	150.00
110	10	290.00


REDUCER

SIZE (MM)	BOX	M.R.P.
110x75	64	62.00


REDUCER TEE

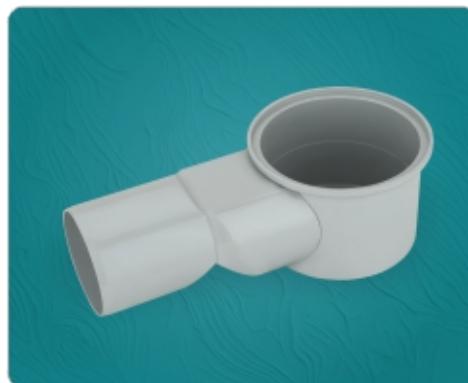
SIZE (MM)	BOX	M.R.P.
110 x 75	33	118.00
160 x 90	-	-
160 x 110	8	400.00
160 x 140	-	-


REDUCER TEE (DOOR)

SIZE (MM)	BOX	M.R.P.
110x75	24	153.00


P-TRAP

SIZE (MM)	BOX	M.R.P.
110x110	18	235.00
125x110	18	248.00


NAHANI TRAP

SIZE (MM)	BOX	M.R.P.
110x75	55	100.00
110x90	45	108.00
110x110	40	120.00


SWR MULTI FLOOR TRAP

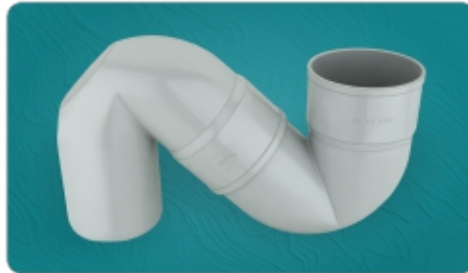
SIZE (MM)	BOX	M.R.P.
110x75	35	220.00

SWR (SEWERAGE WASTE & RAIN-WATER) FITTINGS



CLEANSING PIPE

SIZE (MM)	BOX	M.R.P.
75	96	72.00
110	32	148.00



S-TRAP

SIZE (MM)	BOX	M.R.P.
110x110	15	312.00
125x110	15	314.00



Q-TRAP

SIZE (MM)	BOX	M.R.P.
110x110	17	272.00
125x110	17	282.00



DOOR CAP

SIZE (MM)	BOX	M.R.P.
75	200	20.70
110	150	37.00



VENT COWL

SIZE (MM)	BOX	M.R.P.
75	275	22.50
110	220	39.00



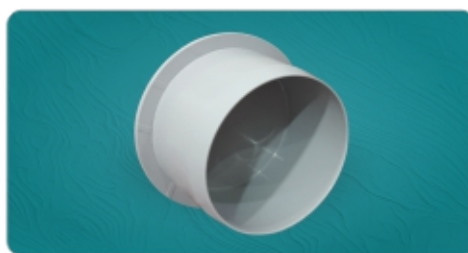
JALI

SIZE (MM)	BOX	M.R.P.
75	-	-
110	400	26.00



PIPE CLIP

SIZE (Inch)	BOX	M.R.P.
75	500	19.50
110	300	24.50



SOCKET PLUG

SIZE (MM)	BOX	M.R.P.
40	-	8.00
50	-	5.00
63	-	-
75	120	30.80
90	-	-
110	80	59.50

SWR PIPES



FITWELL SWR PIPES (A-TYPE) LIGHT

SWR PIPE 10ft. R/S, S/S.

SIZE	M.R.P.
75 MM	430.00
90 MM	610.00
110 MM	830.00
160 MM	1800.00



FITWELL SWR PIPES (B-TYPE) HEAVY

SWR PIPE 10ft. R/S, S/S.

SIZE	M.R.P.
75 MM	830.00
90 MM	980.00
110 MM	1360.00
160 MM	-

The Complete **Plumbing** solution

AGRICULTURE PIPES & FITTINGS

Agriculture & Water Distribution System

One Stop for
multiple plumbing solution
under one roof

Application :

- Agriculture Use.
- Irrigation Purpose Use.
- Chemical Distribution.
- Suitable for Water Distribution.
- Industrial Use.



PRODUCT FEATURES:



Light Weight



High Strength



UV Resistant



Effective Cost



Corrosion Resistant



Easy to Install



Chemical Resistant

AGRICULTURE PIPES & FITTINGS



ELBOW - 4 KG.

Size (mm)	Size (Inch)	BOX	M.R.P.
63	2"	130	26.00
75	2.1/2"	150	33.00
90	3"	75	55.00
110	4"	42	81.00
140	5"	18	145.00
160	6"	13	194.00



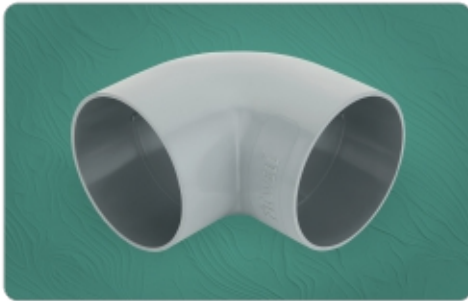
TEE - 4 KG.

Size (mm)	Size (Inch)	BOX	M.R.P.
63	2"	150	30.00
75	2.1/2"	75	49.00
90	3"	50	76.00
110	4"	28	124.00
140	5"	14	194.00
160	6"	15	265.00



COUPLER - 4 KG.

Size (mm)	Size (Inch)	BOX	M.R.P.
63	2"	200	24.00
75	2.1/2"	120	32.00
90	3"	120	40.00
110	4"	80	67.00



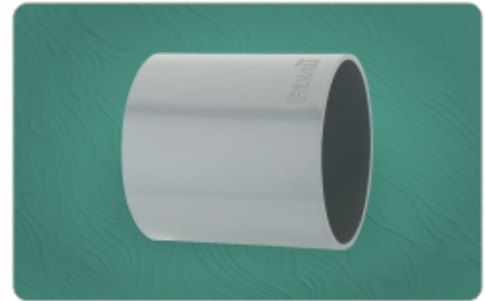
ELBOW - 10/6 KG.

SIZE (MM)	KG.	BOX	M.R.P.
20	10 Kg.	100x90=900	7.00
25	10 Kg.	70x7=490	8.00
32	10 Kg.	30x10=300	12.00
40	6 Kg.	350	17.00
50	6 Kg.	200	25.00
63	6 Kg.	105	34.00
75	6 Kg.	105	57.00
90	6 Kg.	70	95.00
110	6 Kg.	38	146.00
140	6 Kg.	16	306.00
160	6 Kg.	12	400.00



TEE - 10/6 KG.

SIZE (MM)	KG.	BOX	M.R.P.
20	10 Kg.	70x8=560	9.00
25	10 Kg.	50x7=350	12.00
32	10 Kg.	25x8=200	17.00
40	6 Kg.	220	27.60
50	6 Kg.	115	40.00
63	6 Kg.	72	58.00
75	6 Kg.	70	78.00
90	6 Kg.	45	116.00
110	6 Kg.	27	167.00
140	6 Kg.	12	384.00
160	6 Kg.	12	542.00



COUPLER - 10/6 KG.

SIZE (MM)	KG.	BOX	M.R.P.
20	10 Kg.	150x8=1200	4.20
25	10 Kg.	100x7=700	6.20
32	10 Kg.	60x8=480	8.00
40	6Kg.	600	12.00
50	6Kg.	300	19.00
63	6Kg.	170	26.00
75	6Kg.	105	40.00
90	6Kg.	60	65.00
110	6Kg.	60	106.00
140	6Kg.	36	176.00
160	6Kg.	32	246.00



PLAIN END CAP - 4 KG.

Size (mm)	Size (Inch)	BOX	M.R.P.
40	1.1/4"	400	10.00
50	1.1/2"	200	13.00
63	2"	350	18.00
75	2.1/2"	220	26.00
90	3"	130	35.00
110	4"	70	50.00



PLAIN END CAP - 10/6 KG.

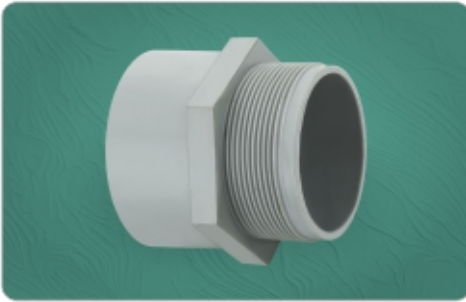
Size (mm)	KG.	BOX	M.R.P.
20	10 Kg.	200x8=1600	4.00
25	10 Kg.	150x8=1200	5.00
32	10 Kg.	100x8=800	7.00
140	6 Kg.	-	150.00
160	6 Kg.	-	178.00



REDUCER ELBOW - 6 KG.

SIZE (MM)	KG.	BOX	M.R.P.
110x90	6 Kg.	50	88.00

AGRICULTURE PIPES & FITTINGS



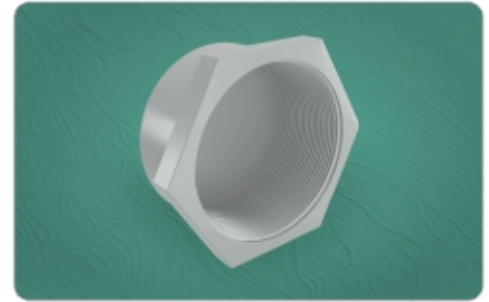
M.T.A. - 10/6 KG.

SIZE (MM)	KG.	BOX	M.R.P.
20	10 Kg.	100x10=1000	6.00
25	10 Kg.	70x9=630	7.00
32	10 Kg.	50x9=450	9.00
40	6 Kg.	200	17.00
50	6 Kg.	140	22.00
63	6 Kg.	200	28.00
75	6 Kg.	120	45.00
90	6 Kg.	75	62.00
110	6 Kg.	45	96.00
140	6 Kg.	-	-
160	6 Kg.	-	-



F.T.A. - 10/6 KG.

SIZE (MM)	KG.	BOX	M.R.P.
20	10 Kg.	100x10=1000	7.00
25	10 Kg.	70x9=630	8.00
32	10 Kg.	50x9=450	10.00
40	6 Kg.	200	17.00
50	6 Kg.	120	26.60
63	6 Kg.	180	32.00
75	6 Kg.	120	51.00
90	6 Kg.	70	72.00
110	6 Kg.	40	99.00
140	6 Kg.	-	-
160	6 Kg.	-	-



THREADED END CAP - 10/6 KG.

SIZE (MM)	KG.	BOX	M.R.P.
20	10 Kg.	100x10=1000	6.00
25	10 Kg.	70x9=630	8.00
32	10 Kg.	50x9=450	10.00
40	6 Kg.	400	14.00
50	6 Kg.	200	22.00
63	6 Kg.	-	25.00
75	6 Kg.	-	31.00
90	6 Kg.	-	45.00
110	6 Kg.	-	63.00
140	6 Kg.	-	-
160	6 Kg.	-	-



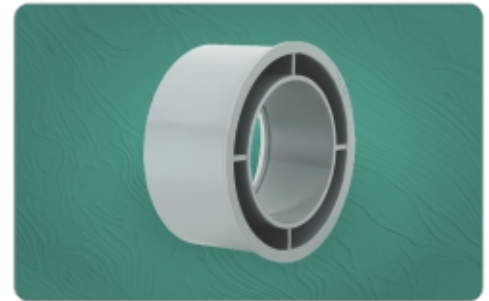
REDUCER - 4 KG.

Size (mm)	Size (Inch)	BOX	M.R.P.
40x20	1.1/4"x1/2"	-	-
40x25	1.1/4"x3/4"	-	-
40x32	1.1/4"x1"	270	11.00
50x20	1.1/2"x1/2"	-	-
50x25	1.1/2"x3/4"	-	-
50x32	1.1/2"x1"	-	-
50x40	1.1/2"x1.1/4"	150	15.00
63x32	2"x1"	-	-
63x40	2"x1.1/4"	140	21.00
63x50	2"x1.1/2"	140	22.00
75x40	2.1/2"x1.1/4"	200	29.00
75x50	2.1/2"x1.1/2"	200	33.00
75x63	2.1/2"x2"	200	32.00
90x40	3"x1.1/4"	-	-
90x50	3"x1.1/2"	84	-
90x63	3"x2"	140	40.00
90x75	3"x2.1/2"	140	40.00
110x40	4"x1.1/4"	-	-
110x50	4"x1.1/2"	72	59.00
110x63	4"x2"	72	58.00
110x75	4"x2.1/2"	72	62.00
110x90	4"x3"	72	59.20



REDUCER - 10/6 KG.

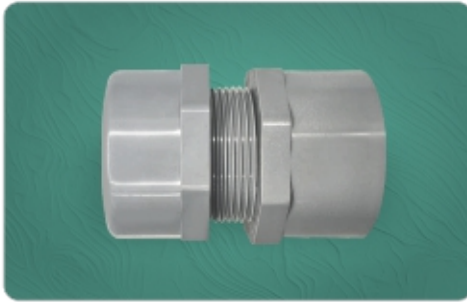
Size (mm)	KG.	BOX	M.R.P.
25x20	10 Kg.	100x8=800	5.00
32x20	10 Kg.	80x8=640	8.00
32x25	10 Kg.	70x8=560	7.00
140x75	6 Kg.	36	109.00
140x90	6 Kg.	36	116.00
140x110	6 Kg.	36	122.00
160x75	6 Kg.	24	123.00
160x90	6 Kg.	24	128.00
160x110	6 Kg.	24	136.00
160x140	6 Kg.	20	146.00



REDUCER BUSH - 4 KG.

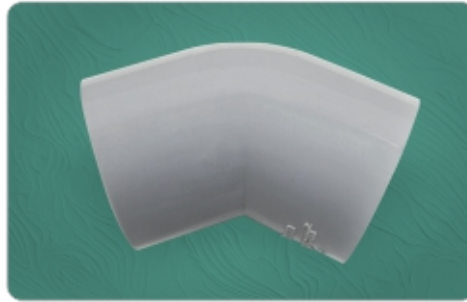
Size (mm)	Size (Inch)	BOX	M.R.P.
50x40	1.1/2"x1.1/4"	200	14.00
63x40	2"x1.1/4"	160	24.00
63x50	2"x1.1/2"	165	25.00
75x40	2.1/2"x1.1/4"	100	37.00
75x50	2.1/2"x1.1/2"	100	36.00
75x63	2.1/2"x2"	100	32.00
90x40	3"x1.1/4"	-	-
90x50	3"x1.1/2"	55	54.00
90x63	3"x2"	55	53.00
90x75	3"x2.1/2"	55	54.00
110x40	4"x1.1/4"	40	-
110x50	4"x1.1/2"	40	76.00
110x63	4"x2"	40	78.00
110x75	4"x2.1/2"	40	79.00
110x90	4"x3"	40	80.00

AGRICULTURE PIPES & FITTINGS



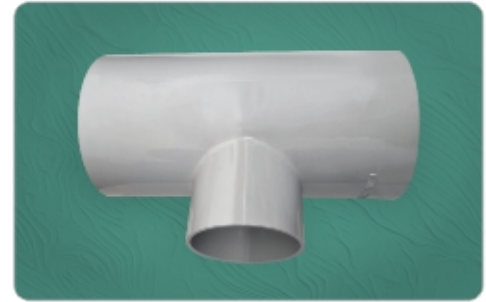
MALE SET - 6 KG.

Size (mm)	Size (Inch)	BOX	M.R.P.
63	2"	-	73.00
75	2.1/2"	-	77.00
90	3"	-	108.00
110	4"	-	160.00



SHOE BEND - 10/6 KG.

SIZE (MM)	KG.	BOX	M.R.P.
20	10 Kg.	100x9=900	4.00
25	10 Kg.	70x7=490	7.00
32	10 Kg.	30x10=300	11.00
40	6 Kg.	400	15.00
50	6 Kg.	225	24.00
63	6 Kg.	130	34.00
75	6 Kg.	75	47.00
90	6 Kg.	80	58.00
110	6 Kg.	45	93.00
140	6 Kg.	27	140.00
160	6 Kg.	14	238.00



REDUCER TEE - 6 KG.

Size (mm)	Size (Inch)	BOX	M.R.P.
75x63	2.1/2"x2"	75	77.00
90x63	3"x2"	50	105.00
90x75	3"x2.1/2"	50	105.00
110x63	4"x2"	30	145.00
110x75	4"x2.1/2"	30	152.00
110x90	4"x3"	30	152.00
140x75	5"x2.1/2"	12	-
140x90	5"x3"	12	340.00
140x110	5"x4"	12	351.00
160x90	6"x3"	12	470.00
160x110	6"x4"	12	475.00
160x140	6"x5"	12	505.00



PVC SOLVENT CEMENT

Size (ml.)	Inner Pack	Master Pack	M.R.P.
50ml.	30	240	45.00
100ml.	24	144	60.00
250ml.	24	96	105.00
500ml.	12	72	180.00
1 Ltr.	6	36	210.00



PVC LONG BEND

Size (mm.)	KG.	BOX	M.R.P.
63mm	6	-	110.00
75mm	6	-	153.00
90mm	6	-	246.00
110mm	6	-	385.00
140mm	6	-	873.00
160mm	6	-	1245.00



PVC RRC COUPLER

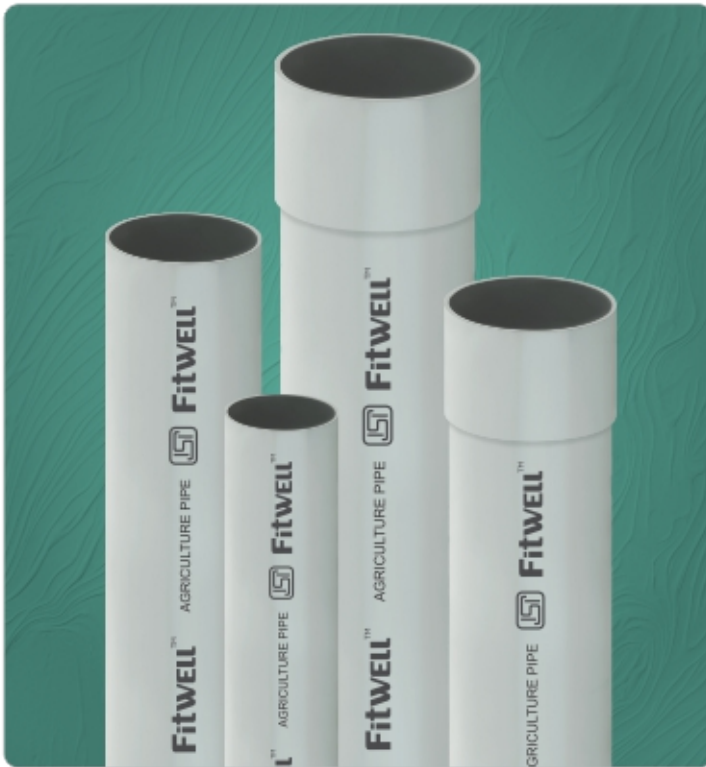
SIZE (MM)	BAG	M.R.P.
63mm	80	115.00
75mm	70	154.00
90mm	60	213.00
110mm	35	317.00
140mm	20	566.00
160mm	15	841.00
180mm	-	-
200mm	-	-



PVC RRJ COUPLER

SIZE (MM)	BAG	M.R.P.
63mm	70	134.00
75mm	50	180.00
90mm	40	249.00
110mm	25	346.00
140mm	15	604.00
160mm	10	810.00
180mm	-	-
200mm	-	-

Fitwell™ PVC PIPES



Fitwell™ PVC PIPE WEIGHT LIST (6MTR)

SIZE	2.5 KGF	4 KGF	6 KGF	8 KGF	10 KGF
1/2" (20 mm)	-	-	-	-	1.100
3/4" (25 mm)	-	-	-	0.890	1.400
1" (32 mm)	-	-	-	1.370	2.000
1.1/4" (40 mm)	-	-	1.650	2.000	2.400
1.1/2" (50 mm)	-	-	2.400	3.150	3.800
2" (63 mm)	-	2.800	4.000	4.800	6.000
2.1/2" (75 mm)	-	4.000	5.500	6.900	8.600
3" (90mm)	3.500	5.600	8.000	9.700	12.300
4" (110 mm)	5.500	8.000	11.400	14.400	18.600
5" (140 mm)	8.400	13.200	18.800	23.500	29.900
6" (160 mm)	11.300	17.500	24.600	30.700	38.700
7" (180 mm)	13.500	21.200	30.300	38.300	47.700
8" (200 mm)	16.700	27.300	38.800	47.300	61.700
9" (225 mm)	21.200	36.750	52.500	59.800	72.800
10" (250 mm)	25.700	45.150	65.650	74.500	90.000

PVC PIPE WEIGHT LIST (6MTR)

SIZE	4 KGF	6 KGF	10 KGF
1/2" (20 mm)	-	-	-
3/4" (25 mm)	-	-	-
1" (32 mm)	-	-	-
1.1/4" (40 mm)	-	-	2.000
1.1/2" (50 mm)	-	2.000	3.000
2" (63 mm)	2.200	2.900	4.000
2.1/2" (75 mm)	3.000	4.000	5.500
3" (90mm)	4.000	5.300	8.000
4" (110 mm)	5.300	7.300	11.000
5" (140 mm)	8.500	12.000	14.000
6" (160 mm)	11.500	15.000	17.000
7" (180 mm)	18.500	20.000	-
8" (200 mm)	21.000	25.000	-
10" (250 mm)	27.000	42.000	-

FRP MANHOLE COVER



Perfect Finish



Better Quality



High Strength

FRP MANHOLE COVER

FRAME OUTER SIZE		FRAME INNER SIZE		APPROX. WEIGHT (KG)	5T M.R.P. PER PCS.
SIZE (INCH)	SIZE (MM)	SIZE (INCH)	SIZE (MM)		
10 x 10	250 x 250	8 x 8	200 x 200	1.700	570.00
12 x 12	300 x 300	10 x 10	245 x 245	3.100	737.00
15 x 15	380 x 380	13 x 13	325 x 325	4.600	1080.00
18 x 18	450 x 450	15 x 15	375 x 375	7.200	1540.00
18 x 24	450 x 600	15 x 20	375 x 580	9.900	2040.00
21 x 21	535 x 535	18 x 18	450 x 450	10.300	2060.00
24 x 24	600 x 600	20 x 20	510 x 510	13.100	2630.00
28 x 28	710 x 710	24 x 24	600 x 600	20.800	4300.00
30 x 30	760 x 760	26 x 26	660 x 660	23.500	4720.00

PLASTIC FAUCET



BIB COCK

TYPE	SIZE (Inch)	QTY. BOX	M.R.P.
Short	1/2"	10	44.00
Long	1/2"	8	47.00



SINK COCK

TYPE	SIZE (Inch)	QTY. BOX	M.R.P.
White	1/2"	2	148.20



PILLAR COCK

TYPE	SIZE (Inch)	QTY. BOX	M.R.P.
White	1/2"	5	135.00



SWAN COCK

TYPE	SIZE (Inch)	QTY. BOX	M.R.P.
White	1/2"	2	157.00



ANGLE COCK

TYPE	SIZE (Inch)	QTY. BOX	M.R.P.
White	1/2"	10	43.00

PTMT FAUCET



BIB COCK WITH FLANGE

INNER PKG.	MASTER PKG.	M.R.P.
24	144	255.00



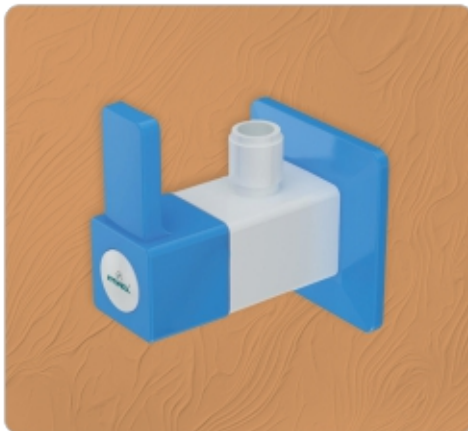
LONG BIB COCK WITH FLANGE

INNER PKG.	MASTER PKG.	M.R.P.
24	144	295.00



PILLAR COCK WITH FLANGE

INNER PKG.	MASTER PKG.	M.R.P.
28	168	375.00



ANGLE COCK WITH FLANGE

INNER PKG.	MASTER PKG.	M.R.P.
42	252	210.00



2-WAY BIB COCK WITH FLANGE

INNER PKG.	MASTER PKG.	M.R.P.
12	72	495.00



2-WAY ANGLE COCK WITH FLANGE

INNER PKG.	MASTER PKG.	M.R.P.
20	120	465.00



SINK COCK WITH FLANGE

INNER PKG.	MASTER PKG.	M.R.P.
14	84	570.00



SWAN COCK WITH FLANGE

INNER PKG.	MASTER PKG.	M.R.P.
14	84	615.00

U CLAMPS



U-BOLT WITH EPDM RUBBER (HEX NUT)

CODE	NOMINAL PIPE SIZE		M.R.P.
	MM	INCH	
101	15	1/2"	21.00
102	20	3/4"	25.00
103	25	1"	27.00
104	32	1.1/4"	30.00
105	40	1.1/2"	32.00
106	50	2"	36.00
107	65	2.1/2"	41.00
108	80	3"	48.00
109	100	4"	56.00
110	125	5"	66.00
111	150	6"	84.00
112	200	8"	100.00

All Dimensions mentioned herein are Approximate and subject to minor variations...



U-BOLT WITH EPDM RUBBER (FLANGE NUT)

CODE	NOMINAL PIPE SIZE		M.R.P.
	MM	INCH	
201	15	1/2"	24.00
202	20	3/4"	27.00
203	25	1"	30.00
204	32	1.1/4"	32.00
205	40	1.1/2"	34.00
206	50	2"	38.00
207	65	2.1/2"	43.00
208	80	3"	50.00
209	100	4"	58.00
210	125	5"	68.00
211	150	6"	86.00
212	200	8"	103.00

All Dimensions mentioned herein are Approximate and subject to minor variations...

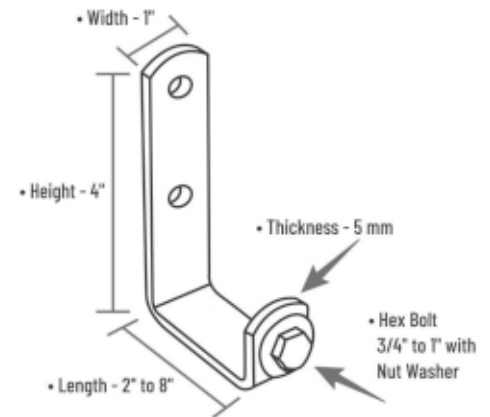


U-BOLT (HEX NUT)

CODE	NOMINAL PIPE SIZE		M.R.P.
	MM	INCH	
301	15	1/2"	18.00
302	20	3/4"	20.00
303	25	1"	21.00
304	32	1.1/4"	23.00
305	40	1.1/2"	25.00
306	50	2"	27.00
307	65	2.1/2"	32.00
308	80	3"	37.00
309	100	4"	40.00
310	125	5"	51.00
311	150	6"	65.00
312	200	8"	95.00

All Dimensions mentioned herein are Approximate and subject to minor variations...

U CLAMPS



L-BEND (MS & ZINC COTTED)

CODE	INCH	WIDTH X THICKNESS	M.R.P.
501	2"	25x5mm	45
502	2.1/2"	25x5mm	48
503	3"	25x5mm	50
504	4"	25x5mm	55
505	5"	25x5mm	60
506	6"	25x5mm	65
507	8"	25x5mm	75

All Dimensions mentioned herein are Approximate and subject to minor variations...



HEX BOLT WITH ZINC COATED

CODE	INCH	M.R.P.
601	3/4"	8.20
602	1"	9.00

All Dimensions mentioned herein are Approximate and subject to minor variations...

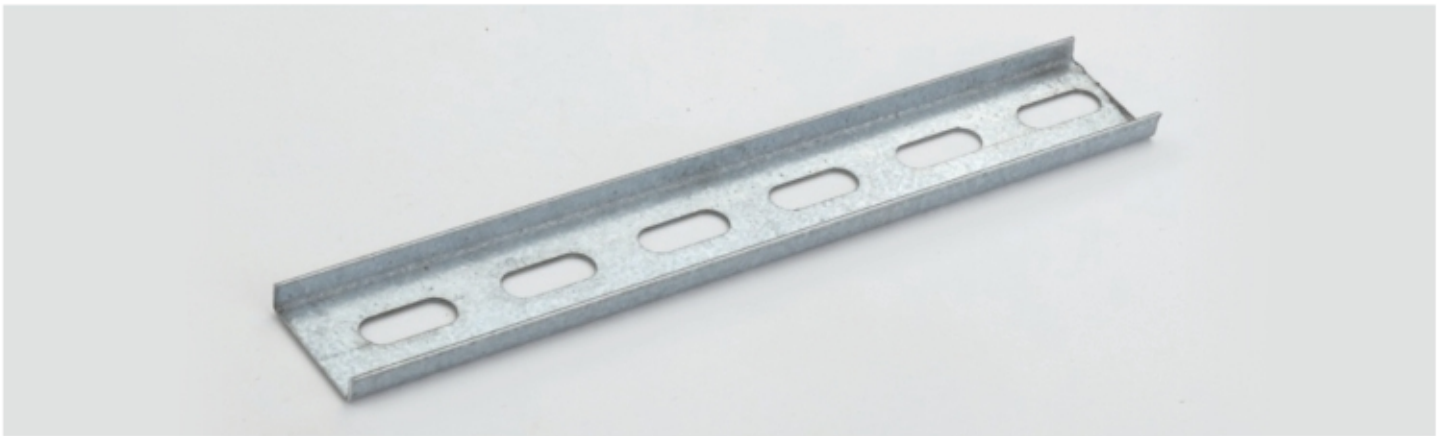


FLANGE BOLT WITH ZINC COATED

CODE	INCH	M.R.P.
701	3/4"	9.20
702	1"	10.00

All Dimensions mentioned herein are Approximate and subject to minor variations...

U CLAMPS

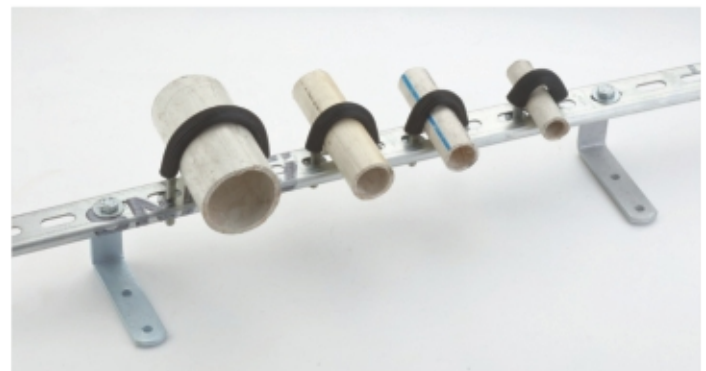


SLOTTED C CHANNEL (GI)

CODE	SIZE IN MM	GAUGE	LENGTH IN FT.	M.R.P.
801	1.2	18	8	387.00
802	1.5	16	8	454.00
803	2.0	14	8	496.00

SLOTTED C CHANNEL (FRP)

CODE	SIZE IN MM	GAUGE	LENGTH IN FT.	M.R.P.
F-801	3	-	8	585.00



All Dimensions mentioned herein are Approximate and subject to minor variations...



SLOTTED Z CHANNEL (GI)

CODE	SIZE IN MM	GAUGE	LENGTH IN FT.	M.R.P.
Z-801	1.2	18	8	680.00
Z-802	1.2	18	8	828.00
Z-803	1.2	18	8	966.00
Z-804	1.5	16	8	827.00
Z-805	1.5	16	8	1082.00
Z-806	1.5	16	8	1420.00
Z-807	2	14	8	965.00
Z-808	2	14	8	1280.00
Z-809	2	14	8	1565.00



All Dimensions mentioned herein are Approximate and subject to minor variations...

PVC GARDEN PIPES



PVC BRAIDED HOSE

30 Mtr. Roll

SIZE	WEIGHT	COLOURS
1/2" (12mm)	3.5 to 4.0	Pink
3/4" (20mm)	5.5 to 6.0	Green, Green Perrot
1" (25mm)	7.5 to 8.0	Yellow
1 1/4" (32mm)	13.0 to 14.5	Orange



PVC GARDEN PIPE CT- COLOUR TRANSPARENT

30 Mtr. Roll

SIZE	WEIGHT	COLOURS
1/2" (12mm)	3.0 to 3.5	Pink
3/4" (20mm)	5.0 to 5.3	Green, Green Perrot
1" (25mm)	7.0 to 7.5	Yellow
1 1/4" (32mm)	12.0 to 12.5	Orange



PVC GARDEN PIPE PP- PETROL PIPE / COLOUR PETROL

30 Mtr. Roll

SIZE	WEIGHT	COLOURS
1/2" (12mm)	3.0 to 3.5	Yellow
3/4" (20mm)	5.0 to 5.3	Pink
1" (25mm)	7.0 to 7.5	Green,
1 1/4" (32mm)	12.0 to 12.5	-



PVC GARDEN PIPE MR - METALIC REGULER / MH - METALIC HEVAY

30 Mtr. Roll

SIZE	MR-WEIGHT	MH-WEIGHT	COLOURS
1/2" (12mm)	3.0 to 3.5	-	Silver
3/4" (20mm)	5.0 to 5.3	6.7 to 7.2	Blue
1" (25mm)	7.0 to 7.5	8.0 to 9.2	Orange
1 1/4" (32mm)	12.0 to 12.5	13.0 to 14.5	Green

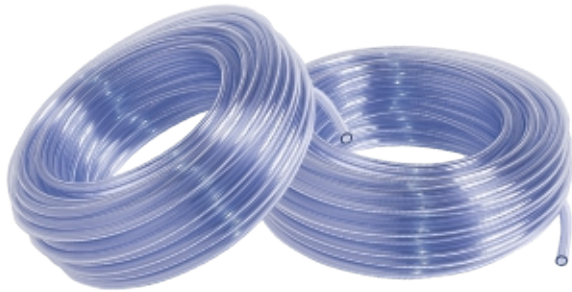


PVC GARDEN PIPE CTZ - CT ZEBRA LINE

30 Mtr. Roll

SIZE	WEIGHT	COLOURS
1/2" (12mm)	3.0 to 3.5	Pink
3/4" (20mm)	5.0 to 5.3	Green Perrot
1" (25mm)	7.0 to 7.5	Yellow
1 1/4" (32mm)	12.0 to 12.5	Orange

PVC GARDEN PIPES & PVC FLEXIBLE SUCTION



PVC GARDEN PIPE LT - LEVEL TUBE TRANSPARENT

30 Mtr. Roll

SIZE	WEIGHT	COLOURS
4 Ani (6 mm)	0.900 kg	White
5 Ani (8 mm)	1.200 kg	-
6 Ani (10 mm)	1.900 kg	-
8 Ani (12 mm)	3.200 kg	-
10 Ani (15 mm)	4.00 kg	-



PVC FLEXIBLE SUCTION

30 Mtr. Roll

SIZE IN MM	SIZE IN INCHES	GREEN & PEROT COLOUR KGS./ROLL	MEDIUM DUTY GRAY COLOUR KGS./ROLL	HEAVY DUTY BLUE COLOUR KGS. /ROLL
3/4"	20	5.0 to 5.5	6.0 to 6.5	6.5 to 7.0
1"	25	6.5 to 7.5	7.0 to 8.0	8.0 to 8.5
1.1/4"	32	9.5 to 10.5	10.5 to 11.5	10.5 to 11.5
1.1/2"	38	11.5 to 12.5	13.0 to 14.0	13.0 to 14.0
1.3/4"	44	17.0 to 18.0	18.0 to 19.0	19.0 to 20.0
2"	50	18.0 to 20.0	20.0 to 22.0	23.0 to 24.0
2.1/4"	60	25.0 to 27.0	27.0 to 28.0	19.0 to 31.0
2.1/2"	63	27.0 to 30.0	30.0 to 33.0	31.0 to 33.0
3"	75	37.0 to 40.0	40.0 to 43.0	41.0 to 44.0
3.1/2"	90	48.0 to 53.0	53.0 to 55.0	55.0 to 58.0
4"	100	69.0 to 71.0	71.0 to 75.0	75.0 to 78.0
4.1/2"	110	75.0 to 80.0	85.0 to 95.0	95.0 to 100.0
5"	125	110.0 to 120.0	120.0 to 130.0	140.0 to 145.0
5.1/2"	140	135.0 to 140.0	140.0 to 145.0	150.0 to 155.0
6"	150	80.0 to 90.0	90.0 to 98.0	95.0 to 100.0

One Stop for multiple plumbing solution under one roof



- ▶ cPVC Pipes & Fittings
- ▶ uPVC Pipes & Fittings
- ▶ SWR Pipes & Fittings
- ▶ Agriculture Pipes & Fittings
- ▶ FRP Manhole Cover
- ▶ PVC & PTMP Faucet
- ▶ Garden - Suction Hose Pipes



FITWELLTM
— PIPING SYSTEMS —

AN ISO 9001:2015 COMPANY



Dealer / Distributor :

Mfg. & Mktg. By :

FITWELL POLYTECHNIK PVT. LTD.

Gujarat - India.



येक हन हडिया



एक कदम स्वच्छता की ओर